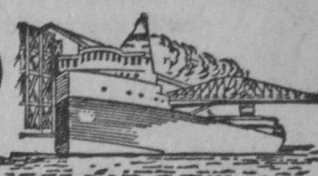


THE TAWAS HERALD

Iosco County-Gypsum Producing Center of the Nation



EIGHTY-NINTH YEAR

RATES: \$3.00 per year in Iosco County \$4.00 per year outside Iosco

TAWAS CITY, MICHIGAN, WEDNESDAY, MAY 30, 1973

Phone (517) 362-3487

NUMBER 22

Outdoor Commencement

TA's Class of 1973 to March Sunday

Open air commencement exercises for the class of 1973 will be held Sunday, June 3, 3:30 p. m., at Tawas Area High School Athletic Field.

This is the second consecutive year for the outdoor program and Prin. John Alexander states that the program proved most successful. "However, we are not taking any chances on the weather. In case of rain, the program will be held in the high school gymnasium," states the principal.

The outdoor Sunday graduation program was inaugurated last year to encourage greater family participation. "Families may attend church in the morning, have a dinner in the early afternoon and then attend the graduation exercises," said Alexander.

This year's graduating class numbers 158 students, with 10 adults receiving diplomas in the community school program.

Commencement speaker will be Dr. Robert C. Mills, 33, an associate

Elliott, president of Tawas Area Board of Education, and Mrs. Helen Payea, trustee.

Members of the graduating class include:

Russell David Ackerman, Brina Antonette Alm, Steven D. Anshuetz, Kenneth Walter Armstrong, Rickey Ashmore, Cynthia Lou Baker, Karen Lee Bellor, John O. Bellinger, Richard M. Bertsch, Nikki Ann Bettis, Deborah Jo Beyer, Lori Ann Birkenbach, Judy Anne Bliss, Richard Eugene Bonino, William Leonard Bouchard, Lawrence Cody Brainard, Cynthia Anne Bremner, Daniel Bryan Brewer, Laurie Ann Brinkman, Donald Emerson Brown, Gregory William Brown, Rodney Dale Brown, Marcia Ann Brugger, Timothy Robert Burch, Richard Allan Burris, Kenneth Lee Busch, William August Busch, Roland Daniel Bygden, Steven E. Call, Michele Marie Campbell, Vicky Sue Charters, Gary Gene Conden, Kenneth Brian Cook, Maria Isabelle Cornille, Myrtle Patricia DeBeau, Timothy James Dillon, Virginia Sue Elliott, Robert William Elliott III, Steven Charles Engle, Wayne Michael Etue, Paul S. Fairbanks, Sandra Marie Feelyn, Vicky Lois Ferns, Thomas J. Foco, Keith Michael Frank, Clyde Russell French, Edith Mary Gardner, Sheryl Lynn Gaubatz, Mary Ellen Gemis, Marlouise Gillen, Steven Charles Gotcher, Jo Dee Grabow, John Edward Gracik, R. Joseph Greenlee, Jeanne Sue Grimes, Jeanne Marie Guonan.



ROBERT C. MILLS

professor of education at Central Michigan University, Mt. Pleasant. A former classroom teacher at Beecher School, Flint, and assistant principal at Clio, he has been supervisor of student teachers for CMU for the past three years. In addition to teaching at CMU, he has been advisor-administrator of research-oriented programs in the area of secondary school administration.

Active in various educational organizations and author of numerous publications in educational journals, he and Mrs. Mills reside at Mt. Pleasant with their four sons.

Among speakers during the program will be Richard E. Bonino and Richard A. Lemon, co-validators, and David Kasiechke, salutatorian.

Presenting diplomas will be Robert

(See GRADUATION, page 2.)



MICHAEL REED, chairman of the Tawas River Canoe Race to be held Sunday, June 10, staged a preliminary warmup Sunday afternoon for local contestants to check out the course for the 20th annual running of this event. Among the contestants paddling

with Reed in these photos are Gary Haglund, Bob Brugger, Russell Sayles, Dale Rapp and Charles Linseman.—Tawas Herald Photos.

Butterfield Ends 37-Year Career in Area Schools

Ronald Butterfield, 60, who was encouraged as a youngster at North Branch to pursue an education in order to become a school teacher, retires this week after serving 37 years in the teaching profession.

Nearly 30 of those years have been spent as a teacher, basketball-tennis coach and principal in the Tawas area and he is the senior member of the school faculty.

"I was born on a farm in Lapeer County and attended a one-room rural school until the family moved into town—North Branch," recalls Butterfield. "On my first day in school, the principal, who was teaching a class in geography, asked if anyone in the class could 'bound' Africa."

"Our geography class in the little rural school had just spent a considerable amount of time on this subject and, when no one else in the class volunteered, I went to the map and named the boundaries of Africa. My principal thought that was quite something. He took me under his wing, encouraged me to become a teacher and here I am today," said Butterfield.

After graduation from North Branch High School, Butterfield attended Central Michigan University, where he graduated in 1934. His first job as a teacher was at East Tawas in 1935, when he joined the faculty of the East Tawas Freshman College, a federal program sponsored by Central Michigan University. The freshmen college was in existence for two years, 1934 and 1935, and CMU granted full credit for all work successfully completed by students.

(After being discontinued for more than 30 years, it is interesting to note that area public schools are currently engaged in efforts to establish a similar freshman college in the Tawas area.)

Butterfield recalls that two of his students in the freshman college were Earl Davis, now a trustee on Tawas Area Board of Education, and Mrs. Ruth (Merschel) Wood.

After discontinuance of the freshman college, Butterfield joined the junior high school faculty at East Tawas, where he taught physics and algebra.

When Steven Young of East Tawas High School was offered the superintendency at Sterling High School, Butterfield accompanied him there as principal. He served five years at Sterling before moving to Algonac and then joined the United States Navy in January 1943. He served three years with the naval air corps during World War II.

Upon his release from active duty, Butterfield was employed by a construction company for 1½ years before returning to East Tawas High School in the fall of 1947, where he served as basketball coach and taught mathematics and science.

Butterfield became principal of East Tawas High School in 1949 and served as principal of the reorganized Tawas Area School from 1953 to 1956, when he resigned that position to devote full time as a science and mathematics instructor in the high school.

Always interested in athletics, he coached tennis at Tawas Area School for several years and his teams won regional trophies during two of those years. His son, David, was a mem-

ber of one of the regional championship squads.

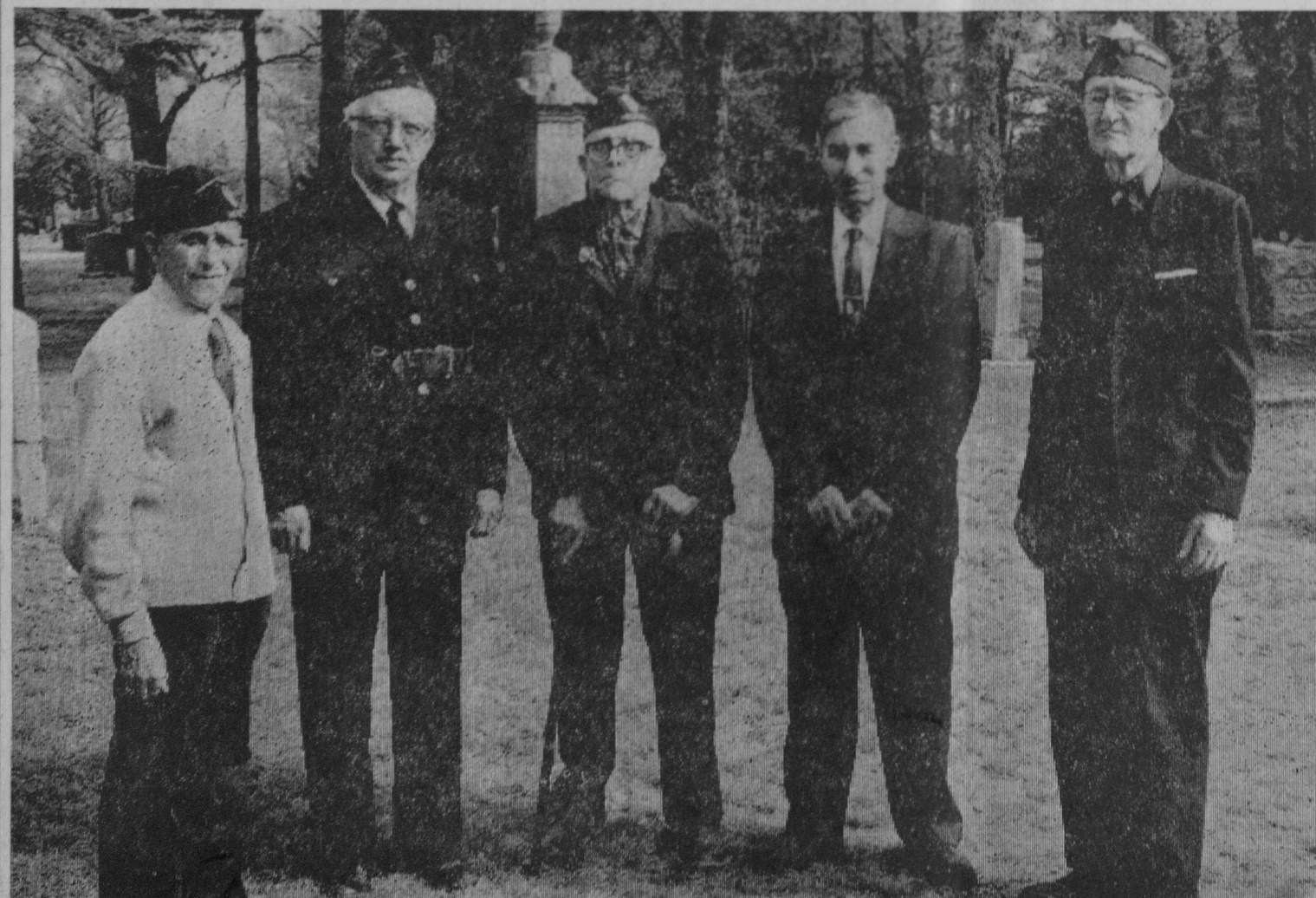
Butterfield was granted his master degree from the University of Michigan in 1951. As a science and mathematics teacher, he received three important fellowships for graduate work. He studied at Case Institute in the summer of 1957 under a General Electric fellowship, matriculated at Cornell University in 1959 under a Shell Oil Company fellowship and received a PSSC physics fellowship to Michigan State University from the National Science Foundation in 1961.

Much of his classroom work at Tawas Area High School has been in chemistry and physics, but for the past four years he has been head of the mathematics department.

Butterfield, who "took up" golfing with zeal late in life, had to reduce such strenuous activity when he sustained a heart attack in 1966. He now devotes a considerable amount of his spare time raising corn and other crops as deer feed at his farm-hunting camp off Townline Road.

At the close of the school day Friday, while giving some mathematics tips to one of his students in an after-school session, Butterfield said that he and his wife, Marion, have no definite plans made for retirement.

"We do not anticipate any problems in keeping busy—there are just not enough hours in the day," he stated.



AMONG WORLD WAR I VETERANS participating in Memorial Day services Monday morning at Memory Gardens Cemetery, Tawas City, were, from left, Leonard Bouchard, Lisle Pratt, Fred Marsh, William Rapp and Fred Pfahl. Bouchard was honorary officer of the day during ceremonies conducted by Jesse C.

Hodder American Legion Post. After three straight days of rain, storm clouds parted Monday morning and the service enjoyed bright sunshine. Rain showers again fell in the afternoon and evening to make a wet and cold holiday week-end.—Tawas Herald Photo.

\$1,000 Purse Is Big Attraction

Expect Record Entry List for 20th Tawas Canoe Race

Twentieth annual Tawas River Canoe Race is slated for Sunday, June 10, and a record field of contestants is expected.

The main reason for the added interest this year is that this race promises to have the richest purse per mile paddled in the state, according to Mike Reed, race chairman.

"With a total purse of \$1,000, it will mean that the race will be worth \$100 per mile of paddling,"

stated Reed Sunday during a trial run on the river.

The races start at noon at Grove's Landing, Tawas Lake. The first divisions, women's amateur and junior, are to proceed from the east end of the lake straight down the river to the finish line at the river mouth. This part of the course covers a distance of five miles.

The next two divisions, professional and men's amateur, are scheduled to start at 12:20 and 12:25 p. m. The starting point will again be Grove's landing. Racers are to proceed to the west end of the lake, turn a flag and return to the east end of the lake to the entrance of the Tawas River.

After following the river course, the men's amateur division is to finish at the river mouth. Professional teams are to proceed to the finish line in Tawas Bay at the Tawas City Park dock.

Entire length of the race course for professionals is 10 miles. Reed expects that there will be between 30 and 50 professional teams in the race representing the United States and Canada.

Because of the larger field of contestants, Reed expects that the race will receive extensive television and newspaper coverage. He said that arrangements had been made with the AuSable River Chapter of the Model A Restorers Club to furnish transportation to visiting members of the press via antique automobiles.

Last year's race was won by John Baker of Ann Arbor and Jack Kolka of Detroit. Kolka was Baker's fourth partner in as many years and each time he has finished with the first place money.

The first team completed the course in 56 minutes, 25 seconds, slightly behind the 54 minutes, 11

seconds required for winning the race in 1971.

Water in the Tawas River is at the highest point on record and, depending on weather conditions on Tawas Bay, a new record time could be set this year.

"The \$1,000 purse should make paddlers just a little more eager to be among the leaders at the finish line and there should be some big excitement in the river," said Reed.

"This fast race is easy to follow for spectators, starting right at Tawas Lake. Bridges along the route offer excellent vantage points from which to get the best view of the river, particularly the East Tawas bridge on Bridge Street and the M-55 span, where past races have been decided."

"With all that money awaiting paddlers at the finish line, there may be a difference this year," states Reed.

Nine Motorbike Crashes Kept State Police Busy

Michigan State Police from East Tawas investigated nine motorbike accidents, two personal injury accidents involving automobiles, three breakings and enterings, one boating accident, along with an assortment of other complaints during the past week.

A portable generator and portable band saw were stolen Thursday from a tool shed in Plainfield Township owned by L. E. Myers Company of East Jordan. The firm is constructing an electrical substation for Consumers Power Company on Flint Road, one-half mile off Long Lake Road.

James Hegwood, Garden City, reported Thursday that a Honda trail bike valued at \$600 was stolen from his storage shed near Oscoda.

Robert Malone, Saginaw, reported Friday that a Suzuki motorbike valued at \$700 was stolen from his cottage on Point Lookout. Two of three motorbikes stolen in that area the week previous have been recovered.

Clarence Steinke, 51, Midland, a passenger in a power boat operated by Duane Brawl on Indian Lake, was treated at Tawas Hospital Monday for injuries received when the boat struck an underwater object and Steinke sustained a lacerated leg while falling into the water.

A Tecumseh man reported Sunday that, while he was driving his truck south on Monument Road near Gordon Creek Campgrounds, a young subject standing in the middle of the highway swung his fist at the moving truck. A mirror on the side of the truck was shattered. The young subject was standing with some companions and the truck driver did not stop at the scene, but reported the incident to the East Tawas post. Officers checked with Tawas Hospital to determine if someone had been treated for a hand and arm injury with negative results.

Ken's Sunoco Service, Tawas City, reported that its wrecker had answered a call for assisting a motorist

at the Gordon Creek Campgrounds. After pulling the car out of deep sand, the driver of the automobile sped off without paying the service fee. The wrecker driver abandoned the chase "due to the large number of undesirable characters in the campground."

Edward P. Guonan, 15, M-55, Tawas City, was injured Monday when the motorbike he was operating ran off a sand trail in Grant Township. He was treated at Tawas Hospital.

William F. Bowers, Cuyahoga Falls, Ohio, sustained minor injuries Friday and was treated at Huron Forest Medical Center, Hale, following a collision on M-65 in Burleigh Township. State police said that an Iosco County Road Commission truck operated by Richard L. Brindley, 46, Hale, had made a U turn on M-65 when the accident occurred.

Dennis J. Lorenz, 26, East Tawas, (See STATE POLICE, page 4.)



I pledge allegiance to the flag of the United States of America and to the republic for which it stands; one nation, under God, indivisible with liberty and justice for all.

THE TAWAS HERALD

PUBLISHED WEEKLY AT TAWAS CITY, (Iosco County) MICHIGAN
Second Class Postage Paid at Tawas City, Michigan 48763

NATIONAL NEWSPAPER ASSOCIATION
FOUNDED 1888
From Press A Key
NNA SUSTAINING MEMBER—1973



N. E. and W. N. THORNTON, Publishers

Do your share for freedom
SIGN UP FOR U.S. SAVINGS BONDS
NEW FREEDOM SHARES

Free copies of one of the world's most quoted newspapers

Judged the most fair newspaper in the U.S. by professional journalists themselves. A leading international daily. One of the top three newspapers in the world according to journalistic polls. Winner of over 79 major awards in the last five years, including three Pulitzer Prizes. Over 3000 newspaper editors read the Monitor.
Just send us your name and address and we'll mail you a few free copies of the Monitor without obligation.

Please Print
Name _____
Address _____
City _____
State _____ Zip _____
THE CHRISTIAN SCIENCE MONITOR
Box 125, Astor Station
Boston, Massachusetts 02123
ZISA

Concert June 1 at Church of Nazarene, ET

The Olivetians will appear in concert Friday, June 1, 7:30 p. m., at the Church of the Nazarene, East Tawas.
This versatile group of collegiate musicians has been in constant demand throughout the Midwest since its organization in 1967. They have been enthusiastically received in a wide variety of appearances including schools, church services, conventions, banquets and professional meetings, as well as on radio and television. They were featured at the general assembly of the Church of the Nazarene last June at Miami Beach, Florida.
The Olivetians, using basically contemporary sound, perform a wide range of songs and their programs are carefully selected so as to appeal to all ages. All the members are students of Olivet Nazarene College, Kankakee, Illinois, and are chosen for this group through highly-competitive auditions. The Rev. Charles D. Ide, assistant to the president of Olivet, accompanies the Olivetians in their appearances.
According to the Rev. Noah Funk, pastor of the local church, East Tawas is fortunate to have this group, which usually travels to larger cities. The public is cordially invited to attend this concert.

Christian Science

919 East Bay Street, East Tawas. Sunday service, 11:00 a. m.; Sunday School, 11:00 a. m.; Wednesday at 8:00 p. m. The Reading Room, located in the church building is open Wednesday 2:00 to 5:00 p. m. and 6:30 to 7:30 p. m.

Radio Series
WIOS - 1480 kc
SUNDAYS
9:35 A. M.

TODAY'S Meditation

from The World's Most Widely Used Devotional Guide



(Read Romans 6:16-23)

You are slaves of the master whom you obey: and this is true whether you serve sin, with death as its result; or obedience, with righteousness as its result. (Romans 6:16, NEB)

Capulin Mountain, New Mexico: It is a June day and we are approaching the base of this huge cinder cone volcano with its almost perfect rim.

As we circle up the road to reach the summit, the cinder smell is inescapable, and on the plain below we see lava beds still definitely outlined after the centuries since Capulin last erupted.

Once at the top, we follow the rim of the crater on foot. At one place the shrubs and scrubby trees are leaning into the prevailing west wind. The direction of their growth is not governed by the west wind, but by the updraft from the crater. The cone wind, not the west wind, is master of the direction in which this vegetation grows.

What wind is prevailing in the direction our lives are taking? Is it the wind that contorts and blights and ruins? Or is it the wind of the spirit of God determining the direction because we have accepted Jesus as our Saviour, and we want our lives "to tell for Jesus?"

PRAYER

O God, we yield ourselves to the influence of Thy governing spirit. Direct us in the way You would have us go. In Jesus' name. Amen.

THOUGHT FOR THE DAY

I want God's spirit to give up my life direction.—Russell Q. Chilcote, Nashville, Tennessee.

Father Neuman Assembly Marks 10th Anniversary

The Father Neuman General Assembly celebrated its 10th anniversary on Tuesday, May 22. A pot-luck dinner was served to more than 100 persons at Tawas Knights of Columbus Hall, East Tawas.

Gordon Hackborn, program director and Boysville chairman of the Gaylord Diocese, acted as toastmaster. Guest speakers were Earl E. Smith, state deputy of Michigan; Donald J. Abler Sr., vice supreme master of the Hennipin Province States of Ohio and Michigan; John W. Schafer, master of the Central District of Michigan, and members of various organizations for the mentally retarded.

Hackborn gave a brief history of the assembly, introducing the past faithful navigators, Paul C. Ropert,

Alphonse Provencal, Stanley D. Drzewiecki, and the present faithful navigator, Anthony Sapino.

Navigator Sapino presented a plaque to the Rev. Fr. Raymond J. Pilarski for meritorious service for the past five years. He was recently transferred to Alpena.

Sapino presented checks totaling \$900 for the following: Ralph Sperry, COOR Association for Mentally Retarded; Mrs. Ruth Donnelly, Arenac Intermediate Schools; Joseph Van-Sumeren, deputy grand knight of the Tawas Council in behalf of Iosco Intermediate Schools.

Graduation

(Continued from page 1.)

Vickie Susan Phelps, Michael Edward Poppe, Randy Allen Potts, Susan Joy Prougner, Donna Susan Proudfoot, Joanne Kay Quarters, Debra Lynn Ronch, Robert L. Rich, Susan Rose Robinson, Virginia Carol Rollin, James Kenneth Rowland, Kathryn Marie Ruth.

Charles A. Saunders, Gary W. Seales, Mitzi Lynn Schanz, Steven Verland Shaver, David Shaw, Sandra Kay Sheehan, Laura L. Skiver, Kathy Ann Smith, Terry Alan Smith, Debra Jo Snyczynski, Gloria Sprout, Mary Elizabeth Sullivan, Linda Kathleen Sutherland, Christine Marie Sutton, Stephen J. Sventko, Bernard J. Tarnosky, Carol Marie Tarnosky, James Robert Thunberg, Philip Lee Ulman, James L. Vane, Carol Ann Vaughan, Vickie Lynn Verville, Willem Eddie Ward, Dale R. Warner, Bruce Allen Weber, Jackie Lou Weber, Jody Jan Wegner, Herbert Waldo Westcott, Robert M. Westcott, Deborah Ann White, Ronnie Dean White, Rhonda L. Whitford, Audrey Moe Williams, Debra Jean Williams, Charles Kimbrell Wood, George William Yanna.

Adult graduates from the community education program are Jeannine Boetrich, Irene E. Champine, John O. Champine, Elizabeth Colek, Rosemary Davidson, Beverly L. Engle, Kathleen Phelps, Tommy Piecki, Lois Robinson, Kay A. Thomas.



REV. AND MRS. GLENN JOHNSON

Glenn Johnsons to Show Pictures On Alaska

The Rev. and Mrs. Glenn Johnson, Alaskan missionaries, will show pictures and relate many interesting adventures they have experienced during their four years in Alaska Thursday, May 31, 7:30 p. m., at the Roadside Chapel, 4 1/2 miles north of Hale on M-65.

Following their furlough here, they plan to continue their missionary work in Alaska.

Funeral Held for Mrs. Gaylord

Funeral services were conducted Tuesday, May 29, for Mrs. Clyde W. Gaylord of Boynton Beach, Florida, at the National Chapel, Boynton Beach. She passed away Friday, May 25, at the nursing home where she had lived for the past several months. She and her husband also had a home on Tawas Lake.

Surviving besides her husband are two sons, two daughters and several grandchildren.

Not Magic but Fact—Classifieds Get Fast Results

Be careful with fire: There are babes in the woods.

And those baby animals and trees need a place where they can grow up strong and healthy. The forest is their home. When you come to visit, please don't burn it down.



Advertising contributed for the public good.

90 Attended IHM Mother-Daughter Night

Approximately 90 mothers and daughters enjoyed the annual Immaculate Heart of Mary Altar Society's mother-daughter banquet Thursday, May 24. The Rev. Fr. Lawrence E. Boks gave the greeting and delivered the blessing.

Participants in the program following dinner were Mary Lou Harger, Claudia Carney, Bernice Oates and Janet Gibbs. Crowning of the statue of Our Blessed Mother was done by Ruth Harger, assisted by Stacey Carpenter, Kelly Gordon, Judy Beaulen, Tina Soules and Ann Cotter.

Awards were presented to Sophia Wood, oldest mother; Karen Sullivan, youngest mother; Beatrice Oliver of Essexville, mother who traveled the furthest to the dinner; Ruth Harger, mother with the most children; Mrs. Helen Bouchard, mother with most daughters present. Four generations of one family were represented by Bertha Montgomery, Mrs. Gibbs, Nancy Soules and Tina Soules.

Men assisting in serving the dinner were Walter Schuhmacher, Clark Tanner, Walter Zaleski and Arnold Petherick.

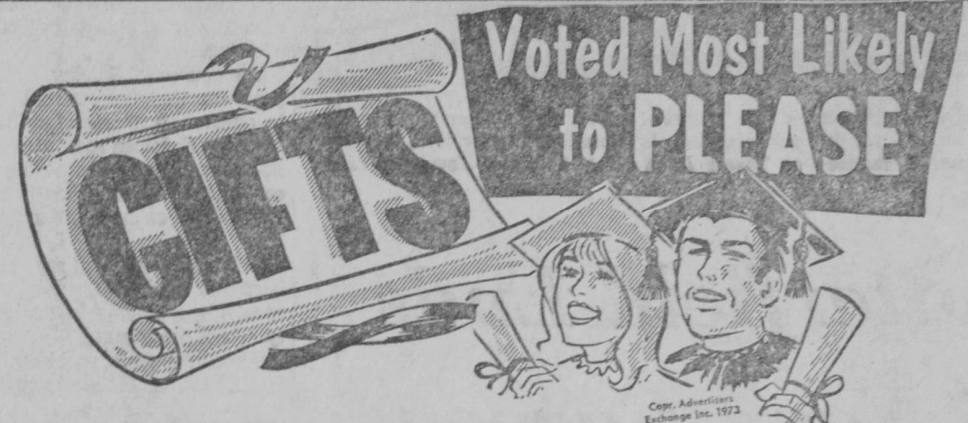
Hear Interesting Program On Missionary Work

Baptist Women's Missionary Society of First Baptist Church, Tawas City, met at the church multipurpose room Thursday afternoon, May 24, with 15 members and two guests present. The business session was conducted by Mrs. Byron Brooks, president.

Love gift was dedicated by Mrs. Paul Sayles.

Miss Linda Klassen, a missionary here on furlough from Africa, presented an interesting missionary program.

Refreshments were served by the Rachel Circle hostesses, Mrs. George Philpot, Mrs. M. E. Irlin and Mrs. David Kennedy.



Even when YOU don't know what to give your graduate — WE DO! Successful gift giving begins with KEISER'S. You can rely on our suggestions for wanted gifts that are sure to please. Come in today and see our special group of GRADURATED GIFTS, ALL PRICED FOR TRUE VALUE.

Store Hours
Daily 9 AM to 9 PM
Sunday 9 AM to 1 PM

WE HONOR BANKAMERICARD MASTERCHARGE



KODAK GIFT SETS from less than \$10.95

SEE OUR SELECTION OF FINE QUALITY COSTUME JEWELRY FROM \$100



TRAVEL ALARM \$12.95

TIMEX WATCHES \$9.95 - TO \$55.00

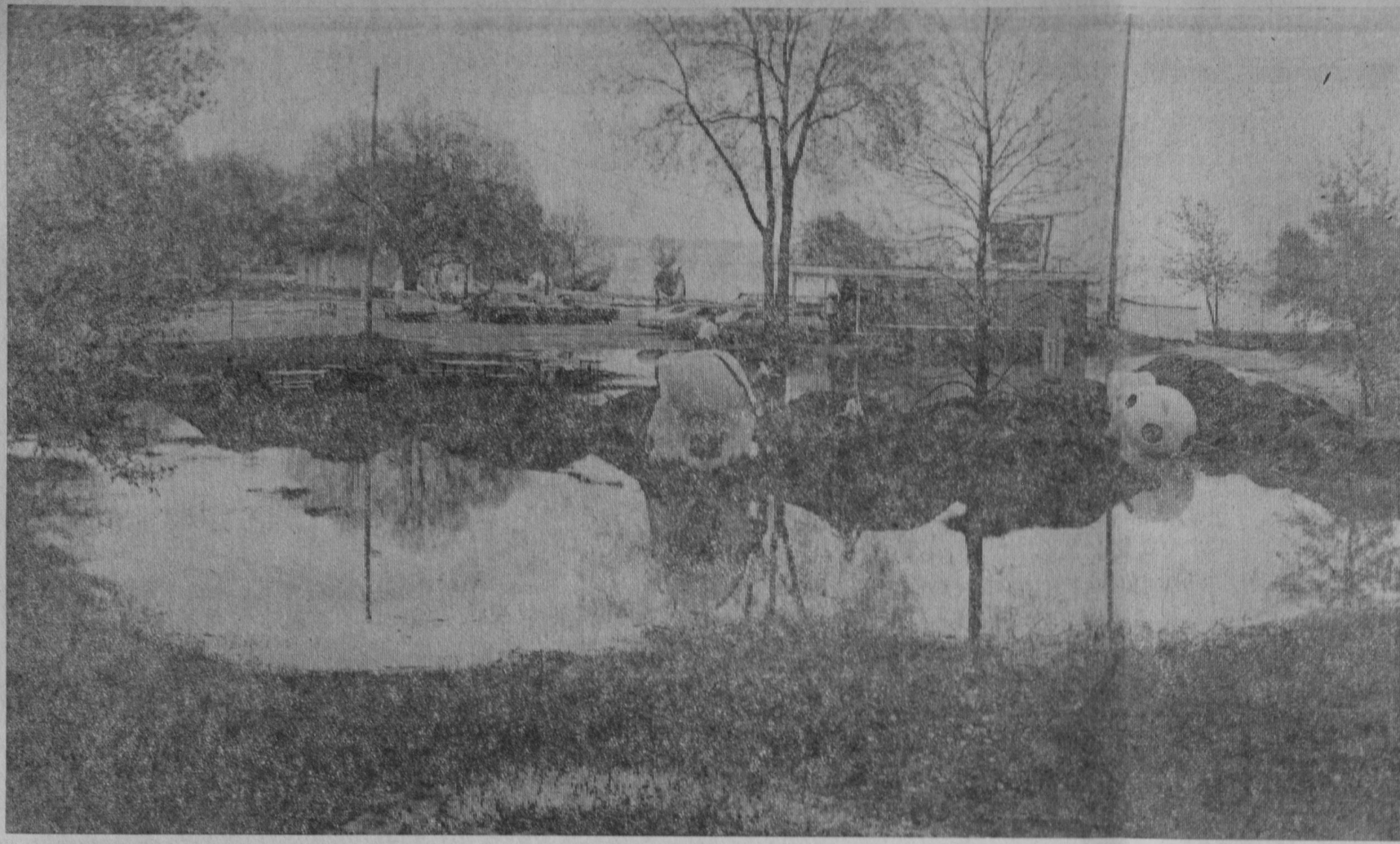
REMINGTON ELECTRIC SHAVERS Replaceable Blades \$25.88

ARPEGE Perfume Mist . . \$6.50
Travel Case . . . \$7.00
PRINCE GARDNER Billfold . . . \$4.00
CELEBRITY Hair Dryer . . . \$10.00
SACHET Clothes Hanger . \$2.00

ENGLISH LEATHER ALL-PURPOSE LOTION \$3.00
MAN'S TRAVEL KIT \$4.95

KEISER'S DRUG STORE
PHONE FO 2-3551 - PRESCRIPTIONS - TAWAS CITY

Presented By—**PRESCOTT REAL ESTATE**
• HIGH AND DRY 85' x 200' lot. The big pine tree buy on Wilber Road.
• 125 ROLLING WOODED ACRES with 4 cottages located on 2,000 feet of lake frontage. Includes meticulously kept 2-bedroom home and good barn.
• THE FINEST IN THE AREA. 1 1/2 Baths, cathedral beamed ceilings, fireplace, newly carpeted and finished garage.
• AT LAKEWOOD SHORES. Lot 228, 5,595 golf course. Lot 229, 5,595 golf course. Lot 201, 14,000 lakefront.
• PARTY STORE WITH SDM. Includes 1 1/2 acres on blacktop. Fine 2 bedroom, 2 bath home.
• 2 BEDROOM, fireplace, basement on double lot. Lake Huron easement.
• 2 BEDROOM, fireplace, large hill lot. Lake Huron easement.
• NO EROSION with this sandy beach 3 bedroom on Lake Huron. 1 1/2 Baths and fireplace.
"LIST and SELL with HUGH and BELLE"
WE ARE PLEASED TO ANNOUNCE THAT JOHN SOLOMON HAS JOINED PRESCOTT REAL ESTATE
206 TAWAS BEACH ROAD EAST TAWAS, MICH.
PHONE 362-4495



IT WAS A DAMP WEEK-END for those expecting to enjoy outdoor activities over the holiday. Wave action on Tawas Bay again saw the west end of the Tawas City Park flooded. On

Monday afternoon, these youngsters walked across piles of fill dirt placed in the park in order to reach concrete playground animals. High water is eroding the beach area and has flooded

the tennis courts. Much of the nation was hit by severe weather conditions over the week-end, including scattered tornadoes.—Tawas Herald Photo.

Golfing...

LADIES GOLF ASSOCIATION

Wednesday League Pts.

Barber-Killingbeck	16
Alexander-VanOrnum	14
Clute-Martin	13
Powers-Rollin	12
Knight-Klenow	11
Myles-Rapp	11
Moe-Chaisson	9
Bolen-Wainwright	9
Protter-Karpp	8
Brown-Hintz	7
Lemon-Czaika	6
Merschel-O'Brien	4

Team Low Net: Knight-Klenow, 79.

Individual Low Net: Dianne Knight, Leona Karpp, Cele Chaisson, 39.

TAWAS GOLF ASSOCIATION

Thursday League Pts.

Crowley-Rollin	48
Ernst-Nelkie	41
Savage-Sullivan	39
Brown-Fairless	39
Look-Gerber	37
Hertzler-Wolfin	36
Walton-Pintkowski	36
Lorenz-Grabow	36
Blood-Larson	35
Karpp-Edwards	32

Junior Braves Won Eight Ball Games

After winning six games the previous week, Tawas Area Junior Braves rang up two more victories last week, both at the expense of Oscoda. Brad Potts was the winning pitcher in the 7-0 first game victory while Terry Davis was the winning pitcher in the 4-0 second game.

Tawas played a very aggressive, challenging type of game and caused Oscoda to make many costly errors. Potts and Bernie Link were top hitters during the first game, each belting two singles. Wayne Revord and Tom Grackic were batting leaders in the second game, each with two hits in three trips.

Dan Kasischke and Revord each posted singles in the first game. Mike Nelson, Kasischke, Earl Parsons and Link collected singles in the second game.

Potts struck out nine batters and walked six. Davis struck out eight and walked one.

Indies Belt 12 Hits and Leslie Shuts Out Lincoln, 9-0

Tawas Indies evened their season's record Sunday at one win and one loss by defeating visiting Lincoln, 9-0, in a seven inning, rain-shortened game.

Ron Leslie was on the mound for the locals and allowed only two singles. He struck out nine batters and walked four.

The Tawas squad pounced on Sharp, starter for Lincoln, for two runs in the first inning and four runs in the second inning. Dale Koepke's two-run double was the big blow in the opening frame. A single by Gene Jordan, a double by Pat Jordan and a single by Frank Jordan, coupled with two walks and a Lincoln error, provided all the action in the second inning.

Tawas scored its seventh run in the fifth inning when Gene Jordan doubled and Corban, Lincoln relief pitcher, walked two batters. The run scored on Frank Jordan's fly ball to left field.

The final two runs came on an error, Chris Herriman's single and two walks.

Gene Jordan carried the big bat for Tawas, slamming two doubles and a single in four trips to the plate. The other Jordan sluggers, Pat and Frank, had two hits each. Somers, with two hits, was the only Lincoln batter able to solve the slants of Leslie.

Action Sunday, June 3, finds Tawas City at Barton City. Schedule for other teams in the Northern Division of the Northeastern Michigan League finds Mikado at Ossineke and Prescott at Lincoln.

Bravettes Won May 21 Meet

Tawas Area Bravettes, undefeated in conference track meets, were top winners in the May 21 meet with Ogemaw Heights and Gladwin. The Tawas girls had 33½ points, Ogemaw had 47½ points and Gladwin tallied 14.

Winning eight first places during the meet for Tawas Area were:

Julie Youngs, one-half mile, two minutes, 39 seconds; Debi Clark, 100-yard dash, 11.9 seconds; Edie Gardner, 220-yard dash, 29.1 seconds; Julie Youngs, one-quarter mile, 64 seconds.

The 440-yard relay team won first place with a time of 55 seconds; Gardner, shot put, 32 feet; Clark, long jump, 15 feet, 10 inches; Linda Kobs, high jump, four feet, eight inches. Youngs won second place in the latter event and Debbie Mooney was tied for third.

TAWAS	AB	R	H
P. Jordan, 3b	3	3	2
Herriman, ss	2	3	1
Koepke, 2b	3	0	1
Blust, 1b	5	0	1
F. Jordan, lf	5	0	2
Busha, c	4	0	1
G. Jordan, cf	4	2	3
Waldecker, rf	2	1	0
Leslie, p	1	0	1
Frank	1	0	0
	30	9	12

LINCOLN	AB	R	H
A. Somers, lf	3	0	0
T. McIntyre, 2b	2	0	0
Averall, ss	2	0	0
J. McIntyre, 3b	3	0	0
Corban, 3b-p	3	0	0
Henry, 1b	2	0	0
L. Somers, c	4	0	2
D. Somers, rf	2	0	0
Sharp, p	1	0	0
Wheeler, cf	1	0	0
	23	0	2

Mrs. Darbyson Hosted Hale Homemakers

Mrs. Clara Darbyson hosted the Thursday, May 24, meeting of Hale Happy Homemakers Extension Group. Nine members and one guest, Mrs. Irene Still of St. Clair Shores, were present. Mrs. Edith Sherock was welcomed as a new member.

Plans were discussed for summer projects and short trips to nearby places of interest.

Next meeting is scheduled for Thursday, June 28.



High Academic Honors Go to Brian Krantz

Brian David Krantz, son of Mr. and Mrs. William A. Krantz, Hale, graduated with high honors in evening ceremonies Thursday at Kirtland Community College.

With a 3.8 scholastic average, he was second in the class of 53 and received two degrees, one in building technology and another in civil technology.

He has been given a scholarship by the board of control for community colleges for full tuition at Lake Superior State College, Sault Ste. Marie, where he plans to pursue his bachelor degree in mechanical engineering starting next October.

For his excellent hockey playing ability, he received the Outstanding Athlete of America Certificate, in recognition of achievement both on and off the field. He is now officially in competition with other award winners for the College Athlete Hall of Fame at Los Angeles, California.

Following graduation ceremonies, a reception was held in the student union for the graduates, their families and friends. Brian's parents; his sister, Lori, and a friend, R. J. Seeley, attended.

THAT'S A FACT

WALKAWAY!
THE U.S. ARMY HAS A RADAR SET SO SENSITIVE, IT CAN TELL THE DIFFERENCE BETWEEN A MAN AND A WOMAN AT A DISTANCE OF OVER SIX MILES. (BY THEIR GAIT!)

SAVE BETTER...
...WORK BETTER! PEOPLE WHO HAVE CONFIDENCE IN THE FUTURE ARE OFTEN BETTER AND HAPPIER WORKERS, AND THE WAY TO ACHIEVE THIS STATE IS TO START NOW BY BUYING U.S. SAVINGS BONDS AND REMEMBER, HAPPINESS IS THE PAYROLL SAVINGS PLAN!

ELEMENTARY
WITH A HALF LIFE OF ONLY 8 SECONDS, THE RAREST FORM OF MATTER ON EARTH IS LAWRENCIUM (ELEMENT 103, SYMBOL LW).

Hale Area News

Miss Lorri Nagle of Redford Township was a guest last week-end of her aunt and uncle, Mr. and Mrs. Glenwood Streeter.

Eight ladies went to Oscoda to help Mrs. Flora Slosser celebrate her 82nd birthday anniversary last Tuesday. Mrs. Slosser resides at the Anne Rauch Rest Home in Oscoda.

Patients recently released from

Tolfree Hospital, West Branch, included Mark McKulsky, Thomas Brumfield and Mrs. Ilene Digard.

Marlin Lewis underwent an emergency appendectomy Tuesday at Tolfree Hospital.

Mr. and Mrs. William Smith (nee Paula Partio) are parents of a son, Joshua Adam, born at Tolfree Hospital.

Last Sunday, the Joseph Bannisters; their son, Bud, and his son, Joseph, visited Mrs. Bannister's brother, Vernon Hartway, who has been very ill at a Pontiac hospital. They also called on her sister's family, the Manley Chamberlains, in Orchard Lake.

NOW OPEN FOR BUSINESS

WILGAS FARM MARKET

ON US-23 AuGRES, MICHIGAN

K. L. VERLAC, Realtor

836 N. US-23
East Tawas, Michigan 48730

Near Fishing
See this smart one bedroom home (could easily be 2 bedroom) near the Tawas River. Fishing at your doorstep. Features carpeting, kitchen with electric range, re-decorated thru-out. Price only \$10,800.00.

Don't be a Rent Slave
Own this attractive two bedroom home close to town. Nicely wooded lot. Extra lot available if desired. Price only \$12,800.00.

Fenced In
Almost new three bedroom home in town with city utilities. Features living room, kitchen and dining area, 1½ baths, 1½ car attached garage, fenced in back yard and much more. Price only \$24,900.00.

Space
Looking for a large two bedroom aluminum siding home. This is it. Large sun porch, living room, country kitchen, utility area, large garage with workshop and overhead storage, city utilities. Price: \$19,900.00.

Within Your Means
Is this nice two bedroom home near town. Features city sewer and extra lot. 1½ Car garage and excellent garden spot. Price: \$16,500.00.

Close In
Nice retirement home near town with city utilities. Natural fireplace, carpeted, garage and partly furnished. Price: \$14,900.00.

Prestige Home
Elegantly styled large three bedroom home. Offers a living room with fireplace, kitchen and large dining area, full bath, basement with recreation room, attached two car garage, approx. one acre of land. All this for only \$33,500.00.

Your Friends in the Real Estate Business,

K. L. VERLAC, Realtor

& ASSOCIATES

Office Phone 362-6101 Home Phone 362-2450

Branch Office: 211 Bullock Street
WHITTEMORE, MICHIGAN 48770
Phone 756-3322

—ASSOCIATES—

Mildred DeBeau — Stan Stasik — Phil Ross
Ed and Alice Cummings

Open Seven Days a Week
and Evenings Monday thru Friday



LAURA LEE SPRINGSTEEN



JERI LYNN FREDERICKSON

Cosmetology Graduates at Kirtland CC

Miss Lauri Lee Springsteen and Miss Jeri Lynn Frederickson were among the cosmetology graduates Thursday at Kirtland Community College.

Attending from Hale were Lauri's parents, Mr. and Mrs. Lloyd Springsteen; her sister, Karen; her aunt and uncle, Mr. and Mrs. Kenneth Salisbury, and Kendra Salisbury.

Miss Frederickson's parents, Mr. and Mrs. Jennings Steinhauser, entertained the group after the graduation ceremony at their St. Helen home.

Miss Springsteen and Miss Frederickson are currently employed at the Lakeland Beauty Shop, Island Lake.

Subscribe to The Tawas Herald, \$3 per year in Iosco County.

TAWAS DRIVE-IN Theatre

BETWEEN TAWAS AND OSCODA ON US-23

Wednesday-Thursday May 30-31

3 Great Disney Hits

"The SWORD in the STONE"

—Also—

TOMMY KIRK ANNETTE

"The Mis(s)adventures of Merlin Jones"

—Plus—

"The SILVER FOX and SAM DAVENPORT"

Friday-Saturday June 1-2

Two for Adults

"The SINGLE GIRLS"

—Also—

ALAN ARKIN

"LAST of the RED HOT LOVERS"

Sunday-Monday-Tuesday June 3-4-5

Adult Twin Bill

A best seller book — now a movie.

WOODY ALLEN'S

"Everything You Always Wanted to Know About Sex But were Afraid to Ask"

—Also—

BURT REYNOLDS

"Here Come the FUZZ"

For the Freezer

GRADE GOOD—Cut and Wrapped

ARM CHUCKS lb. 79c

Tender, Flavorful

Chuck Steak lb. 99c

Tender, Blade Cut

Chuck Roast lb. 89c

English Cut Beef

CHUCK ROAST lb. \$1.09

Boneless Beef

CHUCK ROAST lb. \$1.19

Lean Ground

BEEF CHUCK lb. \$1.19

Arm Cut

SWISS STEAK lb. \$1.09

Boneless Beef

STEW MEAT lb. \$1.19

Braising Beef

SHORT RIBS lb. 79c

FARMER PEET'S PICKLE BOLOGNA

5-LB. JAR \$5.79

FARMER PEET'S

Regular or All Beef, in a chunk

Hickory Stick lb. \$1.29

FARMER PEET'S

FAMOUS RINDLESS BAR-X

SLAB BACON

Whole, Half or End Piece

LB. **89c**

FARMER PEET'S

All Meat Playtime

Polish Sausage lb. \$1.19

FARMER PEET'S

Chunk or Sliced Thuringer or

Cooked Salami lb. \$1.19

THURSDAY — FRIDAY — SATURDAY SPECIALS

KEG BEER—½ and ¼ Barrels in stock at all times

STRAUER'S Country Market

On M-55 Corner Sand Lake Road

18 Persons Jailed in Iosco Over Holiday

Iosco Sheriff's Department reported Tuesday that 18 persons were jailed over the week-end on charges ranging from drunkenness to the use of dangerous drugs. During the week, officers investigated four automobile accidents with personal injuries, five motorbike accidents and one tavern fight.

A child sustained minor injuries Friday afternoon in a two-car collision at the intersection of Whittemore Street and Fourth Avenue, Tawas City. Drivers involved were Clifford J. Becker, 69, Tawas City, and Darlene M. Blust, 36, Tawas City. Harold A. Blust, two years of age, a passenger in the latter car, sustained minor injuries and was treated at Tawas Hospital. Officers said that Becker failed to yield the right of way.

John Espilund, 26, Oscoda, was treated Monday at Tawas Hospital for injuries received in a crash on US-23, AuSable Township. The car, driven by William H. Espilund, 19, crashed into the ditch.

Michael A. Stramaglia, 16, Sterling Heights was treated Saturday at Tawas Hospital for head injuries received in an accident at Gordon Creek Campgrounds. Officers said the victim was riding on the trunk of a car and fell to the ground.

Bryan G. Vazquez, 18, Flint, and Donya R. Dudley, 15, Maplewood, received minor injuries Sunday in a motorbike crash on Monument Road, Wilber Township.

Matthew C. Glendenning, 16, Utica, was treated at Tawas Hospital Sunday after swerving his motorbike to avoid a collision on Monument Road.

Mark R. Grandstaff, 18, Detroit, was treated at Tawas Hospital Saturday after he lost control of his motorbike and struck a tree on Cooke Dam Road.

Michael C. Rowan, 19, was treated Saturday at Tawas Hospital for injuries received when his motorbike was struck from the rear by a car on Monument Road.

Michael J. Ballor, 19, Bay City, was treated at Tawas Hospital Friday for injuries he received when his motorbike struck a car parked on US-23, Tawas City.

Investigation continues into a brawl early Sunday morning at the Hale Tavern. Officers said that a fight apparently started over a pool game. Chairs and windows were broken and one subject was seriously lacerated by broken glass. Officers said that two shots from a small caliber handgun were fired into the ceiling.

Alcoholism- Drug Abuse Conference

The eighth in a series of nine labor-management conferences on alcoholism and drug abuse will be held at Gaylord on Friday, June 1. It was announced today by Dr. Maurice S. Reizen, director, Michigan Department of Public Health. Conferences have already been held at Kalamazoo, Lansing, Muskegon, Saginaw, Flint, Detroit and Marquette. The remaining conference is scheduled for Grand Rapids.

The Gaylord conference will be held at the Holiday Inn. It will be attended by leaders and administrators of labor, management, the community, local government and business from 25 Northern Michigan counties: Isabella, Oscoda, Clare, Gladwin, Arenac, Iosco, Ogemaw, Roscommon, Missaukee, Westford, Alcona, Oscoda, Benzie, Grand Traverse, Kalkaska, Crawford, Antrim, Otsego, Montmorency, Alpena, Charlevoix, Cheboygan, Presque Isle, Emmet and Leelanau.

The purpose of the conference is to assist labor and management in developing occupational programs for combating alcoholism and drug abuse. State occupational program consultants will present the needs, potentials, techniques, mechanics and resources for programming.

"If left uncontrolled, alcoholism and drug abuse can lead to on-the-job accidents, absenteeism, inferior performance and ultimately loss of the employee," said Dr. Reizen. "We want to help both labor and management in coping with these costly problems."

The conferences are the first of their kind in the state's fight against alcoholism and drug abuse. They are sponsored jointly by the Michigan Department of Public Health and the governor's office of drug abuse and alcoholism.

Insure publication of club news by submitting articles promptly to this newspaper.



STORE HOURS:
MOST KROGER STORES OPEN
MON-TUE-WED 8 to 6 a.m. to 6 p.m.
THUR-FRI-SAT 8 to 9 a.m. to 9 p.m.
SUNDAY 10 a.m. to 5 p.m.

XTRA LOW DISCOUNT PRICES

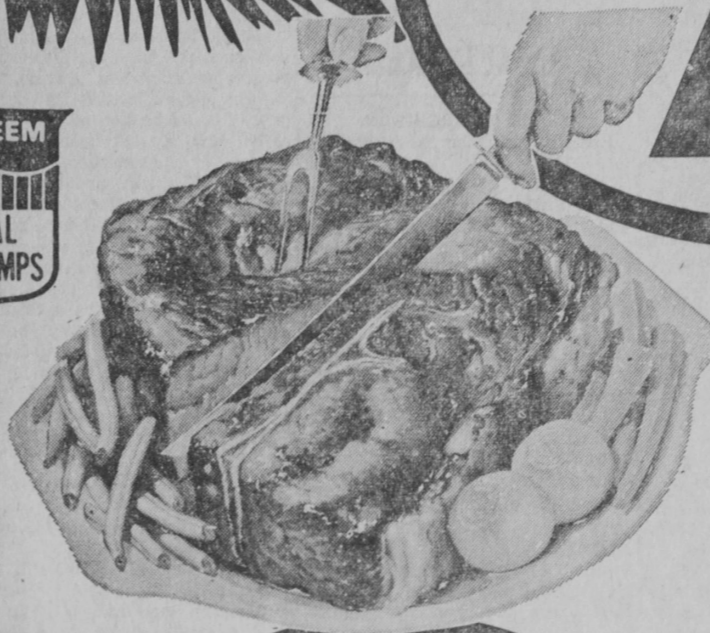
U.S. GOV'T GRADED CHOICE
BONELESS BOSTON ROLL ROAST
LB **\$1.28**

HOMEMADE
BREAKFAST SAUSAGE
LB **69¢**

U.S. GOV'T GRADED CHOICE
CENTER CUT Chuck Roast
LB **77¢**

U.S. GOV'T CHOICE
CENTER CUT Chuck Steak
LB **98¢**

PLUS TOP VALUE STAMPS



KROGER
ALL MEAT WIENERS
12-OZ WT PKG **69¢**

HERRUD HOLLY RIDGE
Sliced Bacon LB 98¢
MARHOEFER
Canned Ham 3 LB CAN \$3.99
U.S. GOV'T GRADED CHOICE
Boneless Chuck Roast LB \$1.28
EL DORADO OR SERVE-N-SAVE
Cooked Salad Shrimp 8-OZ WT PKG 69¢
BULK OCEAN
Perch Fillets LB 69¢
WHOLE OR HALF
Herrud Braunschweiger LB **49¢**

U.S. GOV'T GRADED CHOICE
Delmonico Steak LB \$2.88
U.S. GOV'T GRADED CHOICE
Rib Steak LB \$1.58
U.S. GOV'T GRADED CHOICE 4TH & 5TH RIB
Rib Roast LB \$1.48
CENTER CUT
Rib Pork Chops LB \$1.38
FAMILY PAK
Cube Steak LB \$1.68
½ LOIN SLICED INTO
Pork Chops LB 98¢

HERRUD LEAN & MEATY
SMOKED PICNICS
LB **49¢**
WATER ADDED

XTRA VALUABLE COUPON
With this coupon and \$5 additional purchase. Except beer, wine, & cigarettes.
KROGER GRADE "A"
LARGE EGGS
2 DOZ CTN **99¢** LIMIT ONE CTN
18-D
Good thru Sunday, June 3, 1973 at Kroger in Tawas. Subject to applicable state & local sales tax. Limit one coupon per family.



XTRA VALUABLE COUPON
With this coupon and \$5 additional purchase. Except beer, wine, & cigarettes.
RICH'S FROZEN
BREAD DOUGH
5 1-LB LOAVES **49¢** LIMIT FIVE
18-D
Good thru Sunday, June 3, 1973 at Kroger in Tawas. Subject to applicable state & local sales tax. Limit one coupon per family.

*KROGER **White Bread** 1-LB 4-OZ LOAVES **85¢**
KROGER **Lowfat Milk** GALLON JUG **88¢**
FROZEN **G&W Cheese Pizza** 10 PAK **79¢**
KROGER **Grapefruit Juice** 1-QT 14-OZ CAN **38¢**

KROGER FROZEN
Orange Juice 16-OZ CAN **44¢**
Kroger
Pork & Beans 7 16-oz. cans \$1.00
Gold Crest
Marshmallows 10 oz. pkg. 23c
Ocean Spray CRANBERRY
Juice Cocktail gal. jug \$1.69
Gahhardt
Hot Dog Sauce 10-oz. can 19c
GLAD
Trash Bags 10-ct. pkg. 58c
GLAD
Garbage Bags 30 ct. pkg. 49c

CALIFORNIA
BING CHERRIES
LB **58¢**
FIRST
We reserve the right to limit quantities. Prices and items effective at Kroger in Tawas, through Sunday, June 3. None sold to dealers. Copyright 1973. The Kroger Company.

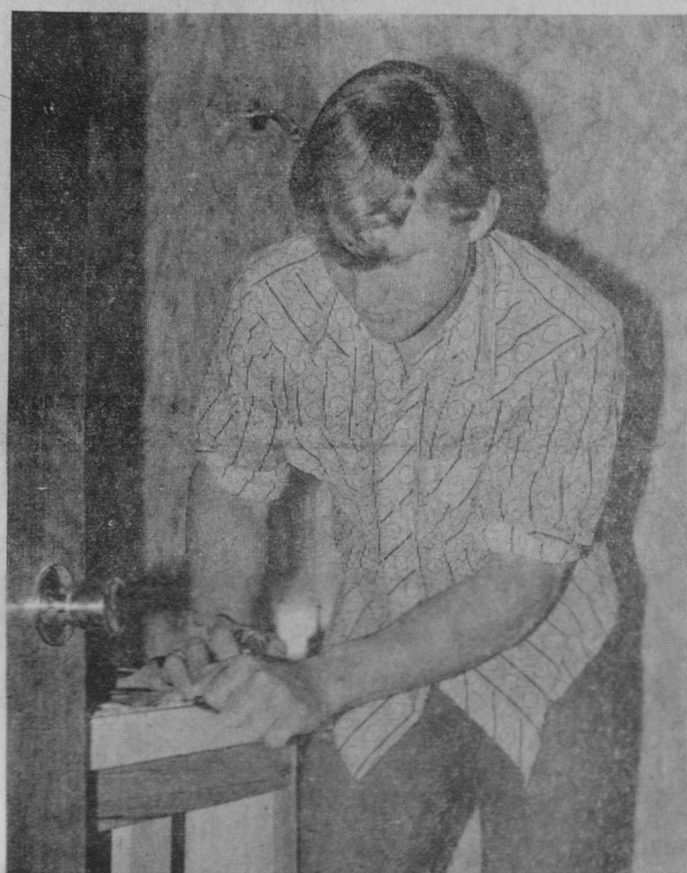
XTRA LOW DISCOUNT PRICES ON FRESH FRUITS & VEGETABLES!
FRESH
Georgia Peaches LB 58¢
CALIFORNIA
Cauliflower HEAD 59¢
Fresh
Mushrooms LB **68¢**
CALIFORNIA
Strawberries QT 79¢
RED MAY
California Nectarines LB 59¢

Xtra Valuable Coupon FROM CLOROX 18-D LIQUID PLUMR QT BTL 53 LIMIT ONE	Xtra Valuable Coupon 18-D COLD POWER DETERGENT 5-LB 4-BOX \$1.09 LIMIT ONE	Xtra Valuable Coupon 18-D ELECTROSAL DISHWASHER 7-LB 4-BOX 43 LIMIT ONE	Xtra Valuable Coupon 18-D DASH DETERGENT 9-LB BOX \$1.89 LIMIT ONE	Xtra Valuable Coupon 18-D IVORY LIQUID QT BTL 53 LIMIT ONE	Xtra Valuable Coupon 18-D CAKE MIXES DUNCAN HINES 3 1-LB 2-OZ PKGS 79 LIMIT THREE	KRAFT DRINK SYRUP Full Gallon Jug Makes 6 12-oz. Cans of Drink—Less Than 4¢ a Gallon Gal. \$2.59
Xtra Valuable Coupon 18-D TOILET TISSUE WHITE CLOUD 3 ROLL PAKS 63 LIMIT THREE	Xtra Valuable Coupon WITH THIS COUPON 18-D 10¢ OFF THE PURCHASE OF REG. DRIP, OR ELECTRA PERK VAC PAC KROGER COFFEE	Xtra Valuable Coupon WITH THIS COUPON 18-D 15¢ OFF THE PURCHASE OF KROGER SAUCE & GRAVY MIXES	Xtra Valuable Coupon WITH THIS COUPON 18-D \$1.00 OFF THE PURCHASE OF 8-LB HORMEL OR MARHOEFER CANNED HAM	Xtra Valuable Coupon WITH THIS COUPON 18-D 50¢ OFF THE PURCHASE OF 3-LB PKG SERVE & SAVE WIENERS	Xtra Valuable Coupon 18-D \$2.00 OFF the price of Fantasia China COFFEE POT \$5.99 Price \$2.00 Coupon Value YOU PAY \$4.99 With Coupon	Xtra Valuable Coupon 18-D \$1.00 OFF the price of Two Fantasia China CEREAL/SOUP PLATES \$1.99 Price \$1.00 Coupon Value YOU PAY \$.99 With Coupon



READY for public inspection on June 2.—Tawas Herald Photo.

House Project Completed



BUILDING a counter top in the bathroom is Thomas Bain, a building trades student from Hale.—Tawas Herald Photo.

Public Showing June 2 at Hale

Students participating in a shared-time building trades program at Hale Area School, in cooperation with three other county schools and coordinated through Iosco Intermediate School District, have completed work on constructing a three-bedroom home at Hale.

The public is invited to attend an open house at the home on Saturday, June 2, 10:00 a. m. to 12 o'clock noon and 1:00 to 3:00 p. m.

First of its kind in Iosco County, this project has received considerable interest and cooperation from area contractors. The building trades program, under Jerry Eno, a building contractor and instructor, is designed to acquaint students with basic fundamentals of building trades and to provide on-the-job experience under supervision.

"Every contractor who has inspected the project has praised the students for quality workmanship," stated Eno. "It was a student project from original planning right to finish carpentry and eventual landscaping."

Under the guiding hand of Eno, the 21 boys, all seniors, were given the opportunity to use their own imagination and taste in planning the home, selection of interior decor and actual construction. The project was started shortly after the opening of school last fall.

The three-bedroom home is carpeted, has 1 1/2 baths, a 1 1/2-car garage, large utility room, a planter dividing the entrance from the living room, floor furnace and plenty of closet space.

"Four or five different contractors donated special tools and the boys received some excellent tips by tradesmen on installing aluminum

siding and floor coverings," said Eno.

This unique project was financed by the Northeastern Michigan Housing Authority of Alpena, which paid the cost of materials and supplied some tools. Other tools were furnished through Iosco Intermediate School District vocational funds and some were purchased by Hale Area School. The housing authority is now offering the home for sale and has listed it through Ira Scofield Real Estate of Hale.

With the 1972-73 program being so successful, next fall's building trades program is to be expanded. Students of Hale Area School and Whitemore-Prescott Area School are to construct a similar home on the west side of the county while students from Tawas Area School and Oscoda Area School are to construct a home on the east side of the county.

"The boys participating in the shared-time building trades program and all four of the cooperating schools, along with the intermediate school district, are hoping that the general public will take an interest in this program by attending the June 2 open house," states Richard Dodge, principal at Hale Area School.

"Everyone has been greatly impressed with the workmanship demonstrated by the boys," said Dodge.

Do your share for freedom
 SIGN UP FOR
 U.S. SAVINGS BONDS
 NEW FREEDOM SHARES

Drive to Hale and SAVE DOLLARS
 On Your Food Budget



Tablerite RIB STEAK
 lb. 99¢

- FARMER PEET'S
Smoked Picnics, lb. 66¢
 TABLERITE Blade Cut
Chuck Roast, lb. 78¢
 TABLERITE Mixed
Pork Chops, lb. 88¢
Florida Cabbage, lb. 15¢
Vine Ripened Tomatoes 3 lbs. for \$1
Faygo, 12-oz. cans (Case of 24) \$2.45

Kocher's Market
 M-65-HALE

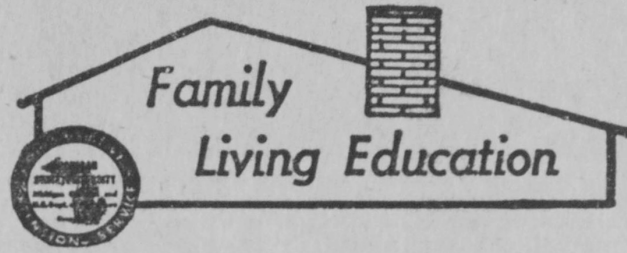


MAKING PLANS for completing the plumbing project on the house are, from left, Jerry Eno (instructor), Steven Anschuetz, Rick Ashmore and James Lewis, all members of the shared-time building trades program. Twenty-one students from four county high schools participated in the program.—Tawas Herald Photo.



HALE AREA EAGLES won the North Star League baseball championship last week with a league record of five victories and no defeats. Standing from left are Coach Al Bromund, Kevin Goodrow, Ken Pincumbe, Tom Emery, Jeff Miller, Greg Pickett,

Steve Denstedt, Keyno Shellenbarger, Joe Bell and Steve Krantz. Kneeling in front from left are Tyson Shellenbarger, Tim Millard, Bruce Bernard, Ernie Maas, Don Springsteen, Oscar Buckner, Jim Bursick and Ron Leamon.—Tawas Herald Photo.



By HELEN B. MEACH
 Extension Home Economist

Have you seen the "Young Homemaker" yet?
 It is a 32-page publication put out every two months by the Cooperative Extension Service. It contains no ads, just usable information on the homemaker and her environment, child rearing, foods and nutrition, home furnishings, clothing and textiles, money and time management, landscape planning and maintenance, indoor plants and outdoor gardening, interpersonal relationships and communication in the family.

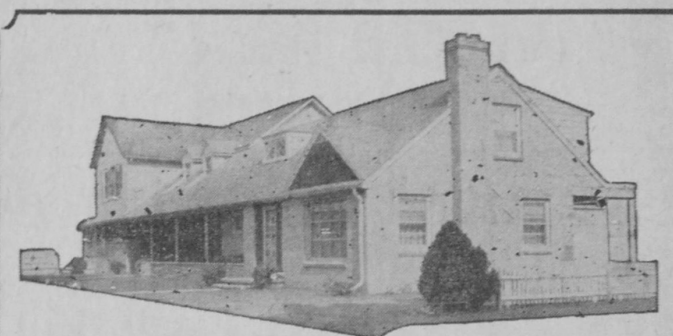


No Quitting Time on Service

We think of the job of servicing our clients as a round-the-clock proposition. After all, losses don't limit themselves to an 8-hour workday. If you suffer a loss... fire in your home, auto accident, business catastrophe... you want help right away. You'll get just that if you place your protection program in our hands.

Tawas Bay Agency, Inc. - Insurance
 EAST TAWAS
 Phone 362-3409

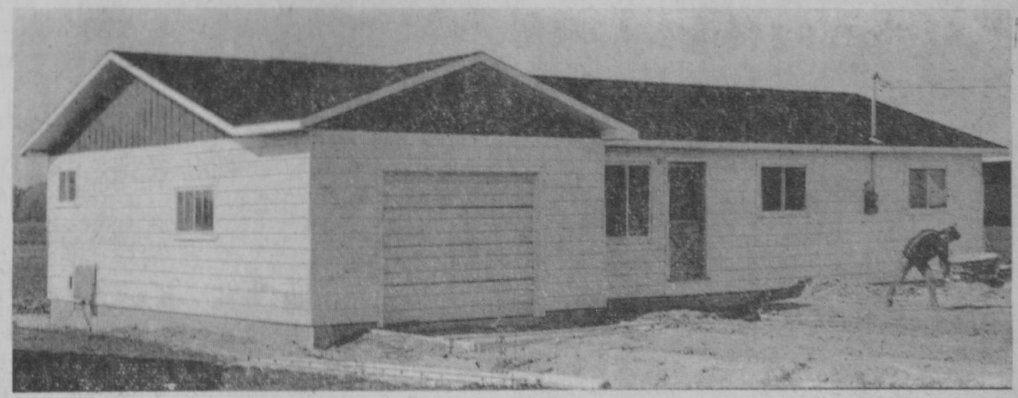
year's enrollment includes all six issues and a looseleaf binder to keep them handy for reference. Sign up today and you will get all three back issues as well as the three to come. Send your name and address and payment, which must accompany your order, to Young Homemaker, Bulletin Office, Post Office Box 231, Michigan State University, East Lansing, Michigan 48823. If you have questions concerning the Young Homemaker publication, write or call the extension home economist in your county extension office.



Death is a Beginning, Not an Ending
 We seek to comfort those who come here through memorial services that reflect a deep faith in life eternal.

BRONZE and GRANITE MARKERS
E. D. Jacques & Son Funeral Home
 416 WHITTEMORE STREET — TAWAS CITY
 PHONE 362-2991

We are Pleased to List
 This Beautiful . . .
**3 - BEDROOM HOME
 IN HALE**



Carpeted, large utility room, 1 1/2-car garage, 1 1/2 baths **\$24,900**

★ THIS HOME was constructed by students participating in the shared-time building trades program sponsored by four high schools of the county and offered by the Northeastern Michigan Housing Authority, which financed the program.

Attend the
OPEN HOUSE Saturday, June 2
 10:00 A. M. to 12 O'clock Noon and 1:00 to 3:00 P. M.

IRA SCOFIELD
 REAL ESTATE
 Hale, Michigan

Subscribe to The Tawas Herald, \$3 per year in Iosco County.

IN THE SERVICE—

Finishes Advanced Infantry Course

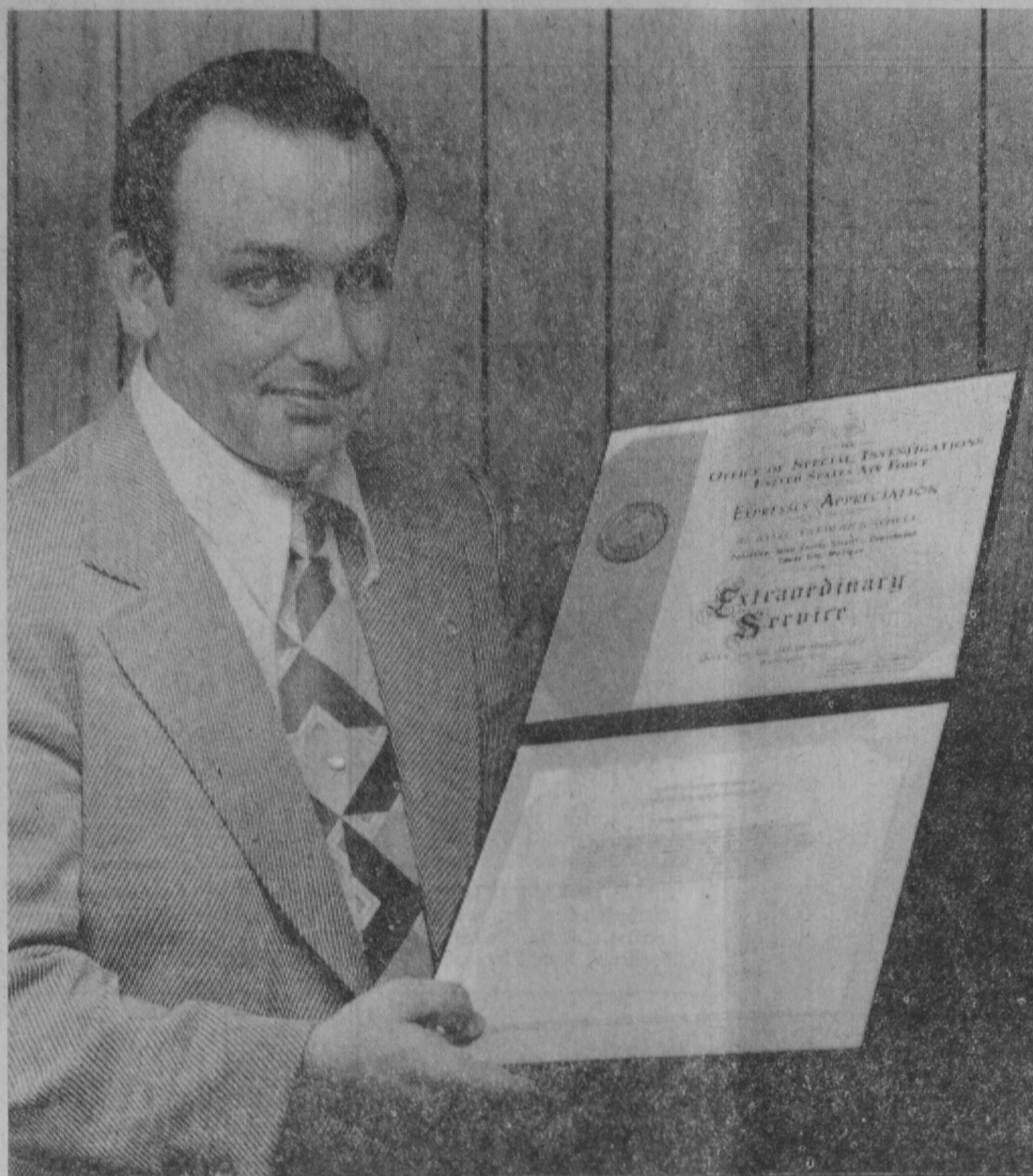
Pvt. John A. Praskin of Oscoda has completed advanced infantryman training at the Marine Corps Base, Camp Pendleton, California.

Reports for Duty at Camp LeJeune

Cpl. Lon F. Shaffer, son of Mr. and Mrs. Edgar J. Shaffer of Turner, has reported for duty at the Marine Corps Base, Camp LeJeune, North Carolina.

He is a 1970 graduate of Arenac-Eastern High School, Twining, and joined the marine corps in November of that year.

WE CARRY-- ALL SCOTT'S PRODUCTS and Bulk - Perennial RYE GRASS BLUE GRASS RED FESCUE MERSCHER HARDWARE 133 Newman St. East Tawas



BASIL ODELL, a member of the Iosco Sheriff's Department and detective until his promotion to undersheriff on May 14, was honored at a ceremony May 22 at Wurtsmith Air Force Base when he received a certificate of appreciation for extraordinary service.

efforts and assistance" made a significant contribution to the successful resolution of many investigations with air force authorities. The citation commended Odell for his "outstanding professional skill, knowledge, leadership and assistance."—Tawas Herald Photo.

WEIKER REALTY NEW 3 BEDROOM HOME—On Johnson Drive, corner of Bay Drive, just minutes South of Tawas City. 20-40-80 WOODED ACRES—On Turtle Road, Sherman Township. 2 1/2 WOODED ACRES—On corner of National City and Keystone Roads, Sherman Township.

from our kitchen... Homemade Pies—Baked to Order Order in Morning - Ready in Afternoon Dutch Apple - Cherry - Blueberry - Raisin - Lemon Banana Cream - Coconut Cream - Or Your Favorite Also—SPECIAL OCCASION CAKES DECORATED TO ORDER The Dutch Kitchen Phone 362-4669 624 Lake St. - Tawas City

The Great Mower Give-away FREE MOWER with the purchase of a new International Cub Cadet Lawn and Garden Tractor. OTTAWA EQUIPMENT CO 840 E. Lake St.—Tawas City Phone 362-3429

Iosco Selects Site for New Co. Airport

15 Years Ago— May 29, 1958—Iosco Board of Supervisors is again making plans to move the county airport from its present location near Tawas Lake.

25 Years Ago— May 28, 1948—According to a report heard by Tawas Kiwanis Club, Michigan Bell Telephone Company has commenced preliminary work on construction of microwave relay towers to link Detroit with a television network extending from Buffalo, New York, to Chicago, Illinois, and St. Louis, Missouri.

35 Years Ago— June 3, 1938—Officers and directors of the Peoples State Bank of East Tawas announce the opening of their enlarged, modern banking quarters.

50 Years Ago— The graduating class of Iosco County Normal numbers 18 students. The class leaves June 9 for a trip through the Upper Peninsula.

75 Years Ago— Commencement exercises for the 72-member graduating class of Tawas Area High School will be held Thursday night at the high school auditorium.

Korean National Assembly. Communist-trained agents were reported to have been attempting to stir up trouble in the United States zone to influence the balloting.

The senate appropriations committee has voted \$50,000 to make the White House safer for the occupants. There seems to be an overabundance of men willing to live there with the floors crumbling and the ceilings around their necks.

R. W. Tuttle Electric Company moved into the Sawyer store, formerly occupied by the Lalonde grocery.

Tawas City High School won the Huron Shore League championship by defeating East Tawas High School in a 12-inning game, 1-0. Batteries were Wegner and Smith for Tawas City, Kusaro and Phillips for East Tawas.

Dr. Arthur E. Morgan, ousted chief of the Tennessee Valley Authority, was the first witness heard by the congressional committee inquiring into the affairs of the TVA.

B. W. Brooks Second Hand and Exchange Store at East Tawas has a large quantity of used round oak tables for sale from \$4 to \$6.

German authorities solemnly assured the Czechoslovakian government that it planned no military expedition against that country.

Annie Gupton Died May 22

Annie L. Gupton of East Tawas, 58, passed away Tuesday, May 22, at Tawas Hospital. The Rev. Lawrence E. Boks officiated at funeral services Friday, May 25, at Immaculate Heart of Mary Catholic Church, Tawas City.

The former Annie DeLosh was born September 12, 1914, in Alabaster. She lived in Alabaster with her father, Claude DeLosh, until his death one year ago when she moved to East Tawas.

Surviving her are a daughter, Patricia Gupton of East Tawas; four sisters, Mrs. Flora Roberts and Mrs. Alice Frank of East Tawas, Mrs. Blanche Butts of Tawas City and Mrs. Norma Moser of Tacoma, Washington; five brothers, William DeLosh of Tawas City, Herman DeLosh of Whittemore, Harold DeLosh of Detroit, Clarence DeLosh of Davison and Maxim DeLosh of Florida.

Preventing forest fires is serious business!

"YOU CAN BANK ON IT"



PASSBOOK SAVINGS

With a convenient regular passbook account you can get the highest legal interest and still make withdrawals whenever you wish.

Farmers & Merchants State Bank HALE ROSE CITY WHITTEMORE

Real Estate Transfers

John R. Yurich and wife to Michael Navetta and wife, 1/2 interest in Lots 16 and 17, Block 2 of Wade's Plat of Sand Lake.

Laudra J. Brownell to Benedict Bongiorno and wife, Lot 34 of South Cedar Lake Subdivision No. 1.

Johnstone Development Company to Russell J. Wilson and wife, Undivided 2/3 interest in Lot 10 of Woodland Glen.

Stuart Beersma Jr. and wife to Russell J. Wilson and wife, Undivided 1/3 interest in Lot 19 of Woodland Glen.

William H. Gohm and wife to Arthur W. Haufler and wife, Lots 23 and 24, Block 3 of Grohm's Subdivision.

Nancy E. Haufler to Nancy E. Haufler, et al, Lots 23 and 24, Block 3 of Grohm's Subdivision.

Marcella A. Dorsey to Daniel O. Pearsall and wife, Lot 4 and Part of Lot 3 of Brinkman's Subdivision.

Robert MacTavish and wife to Frank J. Kassuba and wife, Parcel in Section 3, T23N, R9E.

Frank J. Kassuba and wife to Joseph L. Lents and wife, Parcel in Section 3, T23N, R9E.

Lyle Bielby and wife to John McLeod and wife, Part of NE 1/4 of SE 1/4 of Section 16, T24N, R5E.

Merton Bissonetto and wife to James B. Moses Jr. and wife, Lot 1 of Ausable Riverview.

Ernest T. Koponen to Ernest T. Koponen, et al, Lot 6, Block 2 of John W. King's First Addition to Tawas City.

Arthur Wuggazer to Ronald G. Anderson and wife, Lot 19 of Luce & McKay's Indian Waters.

Alex F. Zawacki and wife to Harold R. Drake and wife, Lot 10, Block 35 of City of East Tawas.

Arthur J. Aulerich and wife to Ralph D. Bronson and wife, SE 1/4 of NE 1/4 of Section 25, T22N, R5E.

Ruth E. Wood, et al, to Patrick V. Demay and wife, Lots 38 and 39 of Hughes Oscoda Heights.

George Milligan to George Milligan, et al, Lot 6, Block 3 of R. H. Martin's Addition to Whittemore.

Frank D. English and wife to Ira Scofield, et al, Parcel in Section 20, T23N, R5E.

Eldon K. Miller and wife to Robert L. Ruckie and wife, Part of SW 1/4 of SW 1/4 of Section 36, T23N, R5E.

Robert L. Ruckie and wife to Arthur W. Morris and wife, Part of SW 1/4 of SW 1/4 of Section 36, T23N, R5E.

Blanche H. Yocum, et al, to John Pickens and wife, Lot 564 and Part of Lot 565 of Lake Huron Sand Beach Subdivision No. 5.

Johnstone Development Company to Leonard Roland Hamann and wife, Lot 1 of Placid Ridge.

Lawrence A. Klinger to James D. Klinger, Parcel in Section 16, T22N, R7E.

Walter W. Thomas and wife to Eugene R. LaVack and wife, Lot 23 of Supervisors Plat of McNichol Heights.

Eugene LaVack and wife to Donald A. Schultz and wife, Lot 23 of Supervisors Plat of McNichol Heights.

Elmer W. Arnold and wife to Lawrence A. Brumback and wife, Lot 3 of Supervisors Plat of Homestead Gardens.

John A. Mortenson to L. C. Surato and wife, Lots 549-552 of Kokosing Subdivision.

Richard B. Moore and wife to Louis

G. Pittman and wife, Lot 150 of Assessor's Plat of Evergreen Glades Subdivision No. 4. George G. Webb to Wiley L. Streeter, et al, Parcel in Section 9, T23N, R5E.

Richard K. Twining and wife to Cynthia O'Drigo, Parcel in Section 4, T21N, R6E.

Russell Cockels to George L. Warren and wife, Lot 5 of Block 19 of Assessor's Plat of Blocks 4, 5, 18 and 19 of City of East Tawas.

Clifford R. Lonsbury to Joseph J. Mitchell and wife, Lot 3, Block 32 of City of East Tawas.

John W. Speschock and wife to Robert T. Noble and wife, Parcel in Section 2, T24N, R8E.

Jennie Smith, et al, to Russell Potts, et al, Parcel in Section 15, T21N, R7E.

Leo J. Atchinson and wife to George Jonescu and wife, Lot 33 of Northern Woods & Lakes Subdivision.

Ottawa Equipment Company to Merle K. Boyd and wife, Lot 68 and Part of Lot 67 of Hull Island Subdivision.

ALWAYS DRIVE SINGLE FILE WINNER TRAFFIC SAFETY POSTER CONTEST

News of Great Importance for Retired Teachers

News of great importance to all retired teachers will highlight a luncheon for the Iosco-Acona Retired Teachers Association Wednesday, June 6, 12 o'clock noon, at the Ausable Inn, Oscoda.

Members are anxious to reach all retired teachers, no matter how recently retired, and hope all in this area will attend the luncheon.

Reservations must be made no later than Monday, June 4, by calling Mrs. Edward Navickas of East Tawas, 362-2286; Mrs. Robert Murphy of Oscoda, 739-2717; Mrs. Alice Kowalske of Harrisville, 724-5144.

WOJAHN FLOOR COVERING Carpeting - Linoleum Ceramic Tile Wallpaper - Paint 30 M-55 - TAWAS CITY Phone 362-3084 46-4fb

LORRAINE'S BEAUTY SALON 442 LAKE ST. - TAWAS CITY STYLING - TINTING - BLEACHING - PERMANENTS COMPLETE SERVICE ON WIGS Operators: Lorraine Ziehl, Vickie Baker PHONE 362-4539 9-4fb

on the right side... your side... side MYLES INSURANCE AGENCY PHONE 362-3425 504 LAKE ST. - TAWAS CITY Representing: Hawkeye-Security and United Security INSURANCE COMPANIES Des Moines, Iowa Financial Security Group Companies

Golfing ...

(Continued from page 3, sec. 1.)
TAWAS GOLF ASSOCIATION

Wednesday League	Pts.
Elliott & Kienow	49
Pollard & Pollard	49
Blake & Walkmaster	49
Haglund & Rapp	42
Nash & Nash	41
Robert & Staudacher	38
Coller & Nash	36
Harris & Greene	35
McCoy & McCue	31
Viar & Docking	31
Elliott & Foley	28
Killey & Albosta	28
O'Neil & Heinritz	26
Wood & Martin	25
Ostrander & Martin	20
Martin & Scott	17
Landon & McMurray	15
Lyon & Trafelet	12

*Postponed match
Team Low Net: Pollard & Pollard, 65.
Individual Low Net: J. Pollard, 32.

LADIES GOLF ASSOCIATION

Thursday League	Pts.
Durant-Sloan	18
Blackmore-Moe	16
Young-Wojahn	12
Lansky-Beauparlant	12
Killey-Price	11
Hosbach-Jacques	9
Steed-Hill	8
Nelkie-Conn	8
Jacques-LaHaye	4
Crowley-Tudor	2
Merschel-Wolfin	0
Busch-Miller	0

*Postponed match.

Team Low Net: Killey-Price, 78.
Individual Low Net: Bea Durant, 38.

Wilber News

Mr. and Mrs. Elmer Newberry and Mrs. Aileen Harris and family of Bay City visited Saturday at the John Newberry home and called on Mrs. Russell Aida.

A bridal shower honoring Miss Judy Hiebrecht was held Friday night at the Wilber United Methodist Church. Ladies enjoyed a nice luncheon and many nice gifts were opened.

Mr. and Mrs. Grant Patterson of Perry spent the week-end here at their home on North Wilber Road.

Mrs. Laura Sugden and son, John, visited at the Francis Dorey home Sunday night.

Mr. and Mrs. George Wright are parents of a son, born last Sunday at Tawas Hospital.

Mr. and Mrs. Neil Abbott called on relatives here Monday night.

The Richard Palmers of Detroit spent the week-end at their home here on Curtis Road.

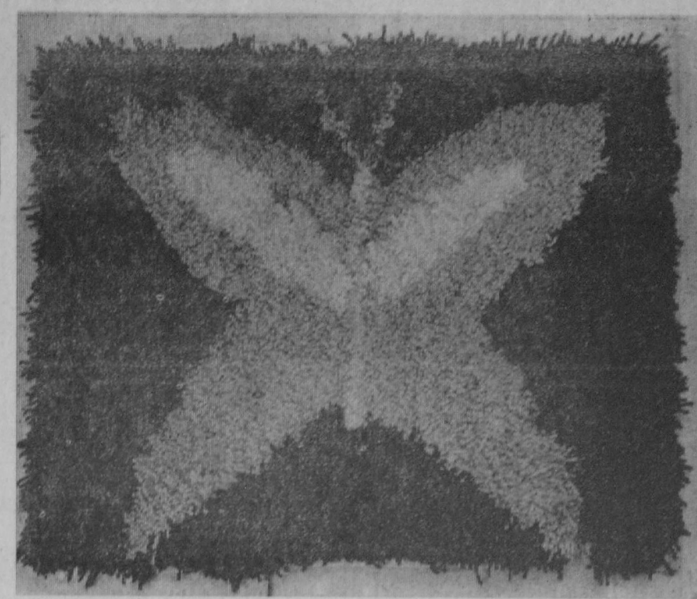
Mr. and Mrs. Jack Aida traveled to Bay City Monday.

Thursday night, Mrs. John Newberry and Mrs. Jack Johnson attended the Tawas United Methodist Church mother and daughter banquet.

Mr. and Mrs. Bertram Harris spent a couple of days in Grand Blanc where they visited their son, Thomas Harris, and family.



Jody Nelson



Becky Wellna

Exhibit by Young Art Students

ART STUDENTS of Tawas Area High School recently held a showing of their work during the present year. More than 40 different works of the students are to be featured in the school's literary magazine, "The Spearhead," to be published following the close of the present term. The Herald has selected five different works to be presented here. Instructors in the art department are John Walton and Mrs. Judith Gidley.



Debbie Mooney



Charlene Shover



Gloria Sprout

Chamber Marked Hospitality Day

Hospitality Day, which is recognized each year by chamber of commerce offices across the state, was

observed at the Tawas Chamber of Commerce office Friday, May 25. Coffee and doughnuts were served free of charge from a decorated table to individuals, especially tourists, stopping by the office. A student from Tawas Area High School was on hand to act as hostess.

Never A Fizzle With A Herald Classified! They Really Work!

BOWLING

Favorite Family Sport

Enjoy the facilities of our new and modern bowling center—Northern Michigan's finest. Eight Brunswick Lanes with Brunswick Automatic Pin Setters.

OPEN BOWLING
DAILY 2 to 5 PM THURSDAY 3 to 5 PM
SUNDAY 2 to 4:30 PM

Hale Creek Lanes

Wayne Wilson, Manager Hale, Mich.

CASE LOT SALE

TRU-TEST Paints

BUY IN CASE LOTS AND SAVE NOW!
You Save More Because We Own TWO Paint Factories!

SUPREME LATEX House Paint

SAVE \$9.68 ON CASE OF 4 GALLONS

REG. \$8.98 GALLON

Our best Acrylic Latex Exterior Paint. Combines the durability of an oil paint with all the easy-to-use features of latex. Resists smog, stains, mildew. High hiding. Dries fast. Quick water clean-up. White and Jamestown colors.

\$6.57 GAL.

STANDARD LATEX House Paint

SAVE \$2.40 ON CASE OF 4 GALLONS

Reg. \$4.98 Gallon

An excellent value at a money-saving low price! Resists fumes, weather, mildew and blistering. Spreads on smoothly. Dries fast. Good hiding. Clean tools in soapy water. Ideal for wood, masonry, stucco, etc. White and colors.

\$4.38 GAL.

True Value HARDWARE STORES
"Use Your Charge Card" OPEN MONDAY THRU SATURDAY

R. G. Schreck Lumber Co.

800 W. Bay Street East Tawas

Insure publication of club news by submitting articles promptly to this newspaper.

NOW!

is the time to check your Duty Shoes for the hot summer months ahead! At LUBIG'S you will find a good selection of Clinic Shoes to choose from.

\$15.95 \$18.95

ALL OUT COMFORT

Lubig's Shoes

EAST TAWAS

"BEFORE YOU MAKE A BIG-CAR DECISION, SPEND A FEW MINUTES WITH A CHRYSLER."



Buying a new car shouldn't be a snap decision, but we think that in just a few minutes our '73 Newport can show you more than enough reasons to move up the Chrysler way.

"Chrysler could easily be your next car."

And all for the lowest Chrysler price of all. Chrysler Newport '73. It'll only take a few minutes. That's the joy of it.

AUTHORIZED DEALERS **CHRYSLER** MOTORS CORPORATION

You're only a few minutes away from a Chrysler.

Ottawa Equipment Company

840 Lake Street - Tawas City



BLACK SMOKE poured out of Brooks Auto Parts scrap yard Wednesday evening. Workmen had been using an acetylene torch to cut an old car earlier in the afternoon and sparks apparently smoldered for several hours in the interior before bursting into flame. Tawas City firemen report that the department answered several grass fire calls during the week.—Tawas Herald Photo.

Special Credits Granted After 65

Question: Last year at 68, I finally sold my business and retired. My wife says she heard I will get some sort of social security credit because I did not get any checks for over three years after I was 65. Is my wife right?

Answer: Yes. People who received no social security retirement benefits before 65 and continued to work without getting benefits after 65 qualify for special credits. These credits increase your benefit amount one percent for each year (or one-twelfth percent for each month) after 1970 that you worked after age 65 and did not collect monthly payments. If you are eligible, you will receive an increase in your benefit amount around the middle of this year. The increase is automatic; you do not have to apply for it.

Question: Both my husband and I get monthly social security retirement checks based on my husband's work record. I know that a person getting checks can earn as much as \$2,100 a year and still get all his benefits. May each of us earn \$2,100 or is that the amount we can earn together?

Answer: Each of you can earn as much as \$2,100 in a year and still receive all of your benefits. If you earn over \$2,100 in a year, your earnings will reduce only your benefits and not the benefits of your husband; however, his earnings could reduce both your benefits and his because the monthly social security payments are based on his work record.

Question: I am now getting retirement benefits and I will be 65 in August. When can I sign up for medicare?

Answer: You will not have to sign up. Since you are already getting checks, you will be enrolled automatically for both hospital and medical insurance when you are eligible. There is a monthly premium payment for the medical insurance, but you can decline the coverage if you want to.

Question: Last year when I was 65, I signed up for the medical insurance part of medicare. However, I could not get hospital coverage because I did not have enough work credits under social security. I read that there were some recent changes made in medicare. Would it be possible for me to sign up for hospital insurance now?

Answer: Yes, anytime between now and August 31 you can enroll in the hospital insurance program for a monthly premium of \$33. However, for your coverage to start July 1, the first date it can start, you need to enroll by May 31. To get this coverage, you have to be 65 and also enroll in the medical insurance program.



A DEALERSHIP
OPPORTUNITY
BIG AS
ALL OUTDOORS

A capital investment on your part is minimal. Case provides wholesale financing with floor plan privileges to make it possible for you to sell from a "full shelf". You can finance retail sales through Case Credit Corporation. The most important qualification by far is YOU. If you enjoy meeting people, selling them on the fun of home care with Case equipment and providing their relatively simple service needs, you have the makings of a profitable dealership. We'll supply the product and service know-how as well as management training.

Interested? Now is the ideal season to investigate the Case franchise. Call or write Jack Zeigler, J I Case Company, Wisconsin Wisconsin 54896. My toll-free phone number is 800-558-0270.

J I Case
A Tenneco Company



for recreation, fun... try a
STATE PARK



**HARTWICK
PINES**
STATE PARK



ONE OF THE FEW REMAINING TRACTS OF VIRGIN TIMBERLAND MAY BE SEEN AT HARTWICK PINES STATE PARK, SEVEN MILES NORTH-EAST OF GRAYLING ON M-93. THE PARK, COVERING 9,138 ACRES, IS SITUATED IN THE CENTER OF MICHIGAN'S ONCE-GREAT WHITE PINE FOREST. IT INCLUDES MORE THAN THREE MILES OF THE EAST BRANCH OF THE AU SABLE RIVER, ONE OF MICHIGAN'S FAMOUS TROUT AND CANOE STREAMS. A MARKED TRAIL LEADS TO A 155-FOOT MONARCH PINE, LUMBER ERA RELICS AND A MEMORIAL CHAPEL IN THE PINES.

IF NEW TO YOU, PRACTICE TRAILER HANDLING BEFORE YOU START ON YOUR FIRST TRIP. HAVE SOMEONE EXPERIENCED TEACH YOU THE TECHNIQUES, PARTICULARLY BACKING UP. REMEMBER, WHEN BACKING A TRAILER, THAT THE UNIT TURNS IN THE OPPOSITE DIRECTION OF YOUR CAR'S FRONT WHEELS.



Bring 'em back
ALIVE!

DESIGNED FOR (AAA) BY S. LEE BOWERS

Bowling ...

TAWAS LANES		
Senior Citizens	W	L
Tawas City	4	0
Alabaster	3	1
Hals	3	1
East Tawas	2	2
Tawas Lake	2	2
Omer	1	3
Ossoda	1	3
AuGres	0	4

Individual High Series: Grant Warner, 629; Hans Hagen, 627; L. Lindner, 607.

Individual High Single: Hans Hagen, 265; Grant Warner, 233; Thelma Martindale, 227.



In year-around air conditioned, all automatic Tawas Lanes.

- 10 Bowling Lanes
 - Bowling Shoes
 - Bowling Balls
 - Bowling Bags
 - 2 Pool Tables
 - Pizza
 - Hamburgers
 - Cold Beer
- for FUN and RELAXATION
VISIT ...
- TAWAS LANES**
& COLONIAL LOUNGE
- On US-23 — Tawas City

Lower Hemlock

The Lawrence Butler family of Westland enjoyed the week-end at their Sand Lake cottage. While here, they visited her parents, Mr. and Mrs. Lawrence Ball.

Mrs. Clarence Fowler of Bay City and Mrs. Myrtle Schenck of Dela-

ware, Ohio, spent Memorial week-end at the George Biggs residence.

Mr. and Mrs. Richard Stock enjoyed the holidays with the Louis Bartz family at Alpena.

Mrs. Mabel Melle of Flint spent last week with her sister-in-law, Mrs. Charlie Simons Sr.

Mr. and Mrs. Carl Grabow Jr. of Swartz Creek enjoyed the week-end at their Sand Lake cottage. While here, they visited his mother, Mrs. Carl Grabow Sr.

Mr. and Mrs. Lyle Long and daughter, Linda, were in Grand Rapids last week-end.

Mr. and Mrs. Elwood Herriman; their sons, Craig, Rodney and Kurt, and three friends, all of Davison, were week-end houseguests at the home of Mrs. Lucile Rainsberger.

Mr. and Mrs. Timothy Klenow and son, Anthony, of Hubbell visited relatives and friends in the Tawas area over the holidays.

Last week, Mrs. Wilfred Youngs was at the home of her son, Jerry Youngs, in Saginaw, while his wife was hospitalized. Jennifer Youngs accompanied her grandmother home and is visiting at the Howard Look home this week.

Sympathy is extended to the families of William Kobs and John O'Farrell.

Mr. and Mrs. Stacy Simons of Bay City enjoyed the holidays at their Sand Lake cottage. While here, they visited his mother, Mrs. Charlie Simons Sr.

Mr. and Mrs. Ralph Beebe of McMillan were Tuesday evening callers at the home of Mrs. Rollie Gackstetter.

The James Kattermans are living at their new home site on Chambers Road.

Callers the past week at the home of Mrs. Luella Price and Mrs. Winnie Latham were Mr. and Mrs. Roland Brown of Sterling, Doctor Seymour of Union City and Mrs. Leeta Schlaack.

Frank Long of Grand Rapids enjoyed the holiday week-end at the home of his parents, Mr. and Mrs. Lyle Long.

Sunday, May 20, Louise Butler, seven-year-old daughter of Mr. and Mrs. Lawrence Butler (nee Rosemary Ball) of Westland, made her First Communion at the Immaculate Heart of Mary Catholic Church. She wore her mother's First Communion dress and veil. The immediate family ate breakfast at The Dutch Kitchen. Open house was held in the afternoon at her parents' Sand Lake home.

Mr. and Mrs. John Miller and daughter, Heather, of Saginaw were recent visitors at the Milton Unkel residence.

Mr. and Mrs. B. William Olsen of Wilber Township were Friday evening callers at the home of Mrs. Wilfred Youngs.

Sherry Herriman of Alexandria, Virginia, enjoyed the holidays at the home of her parents, Mr. and Mrs. Clare Herriman.

Mrs. William Johnson of Flint was a recent caller of Mrs. Lucile Rainsberger.

The past week, Mr. and Mrs. Frank Kessler of Flint, Carl Youngs, Mr. and Mrs. Roy Brooks, Mrs. Richard Look and Mrs. Matilda Jaryela were visitors at the William Sherman residence.

Thursday, Mr. and Mrs. Walter Miller and son, Ronnie, were birthday dinner guests at the Henry Schatz home. The occasion was Ronnie's 21st birthday.

Last week, Mrs. Jane Ford of Flint visited her daughter, Mrs. Michael Reed, and family. Thursday, Mrs. Ford visited her sister, Mrs. Clifford Morden, and husband.

Memorial Day week-end guests at the Milton Unkel home were Bryon Unkel of Saginaw, Mr. and Mrs. Willard Unkel of Detroit and Dale Huff of Fenton.

Mr. and Mrs. Chelsea Chambers of Detroit visited his mother and aunt, Mrs. Luella Price and Mrs. Winnie Latham, over the holiday week-end.

Mr. and Mrs. Harold Frye of Bay City were week-end houseguests of his parents, Mr. and Mrs. Henry Frye.

CASE LOT SALE

BUY IN CASE LOTS AND SAVE NOW!
You Save More Because We Own TWO Paint Factories!

SUPREME LATEX House Paint

SAVE
\$968

ON CASE OF
4 GALLONS



REG. \$8.98 GALLON

Our best Acrylic Latex Exterior Paint. Combines the durability of an oil paint with all the easy-to-use features of latex. Resists smog, stains, mildew. High hiding. Dries fast. Quick water clean-up. White and Jamestown colors.

\$657
GAL.

STANDARD LATEX House Paint



SAVE
\$240

ON CASE OF
4 GALLONS

Reg. \$4.98 Gallon

An excellent value at a money-saving low price! Resists fumes, weather, mildew and blistering. Spreads so smoothly. Dries fast. Good hiding. Clean tools in soapy water. Ideal for wood, masonry, stucco, etc. White and colors.

\$438
GAL.



"Use Your Charge Card"
OPEN MONDAY
THRU SATURDAY

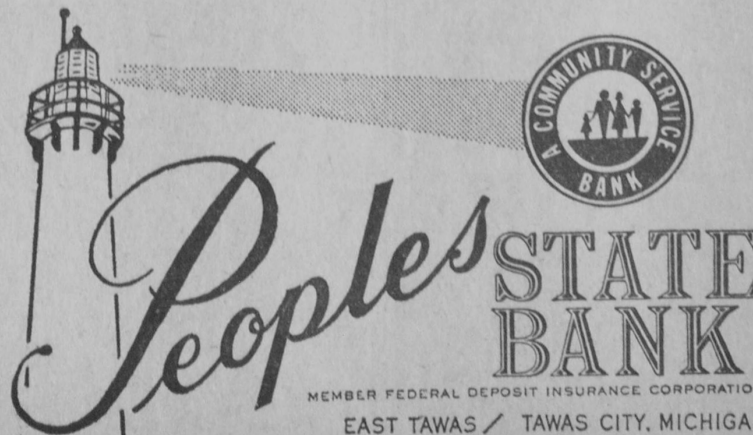
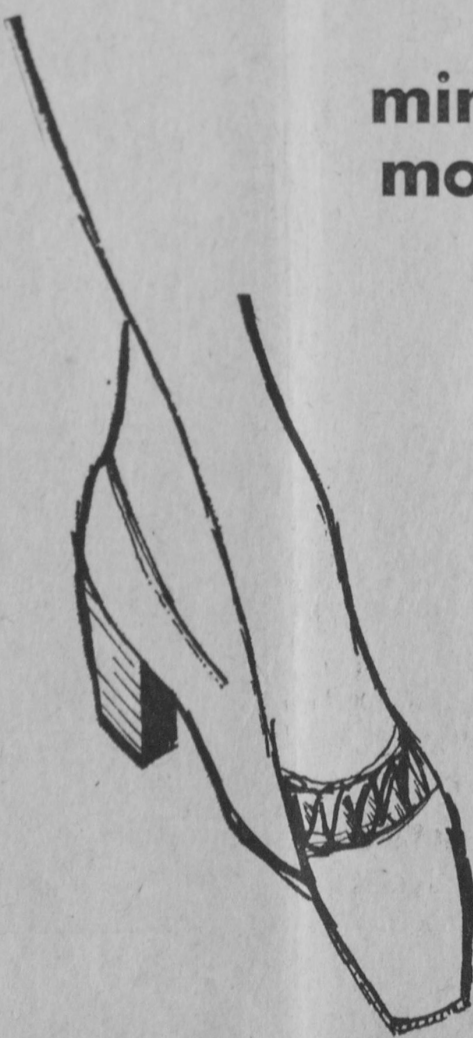
R. G. Schreck Lumber Co.

800 W. Bay Street

East Tawas

Drop in. It takes only a few minutes to arrange your home mortgage loan.

Whether you're building or buying a new home, Peoples will assist you with home mortgage financing. It's quick. It's easy. And, the INTERESTED bankers offer concerned, experienced and efficient financing service. Stop by and discuss your home mortgage financing needs with one of the INTERESTED bankers at Peoples, your hometown bank. It's the easy, sensible way to finance your new home!



MEMBER FEDERAL DEPOSIT INSURANCE CORPORATION
EAST TAWAS / TAWAS CITY, MICHIGAN

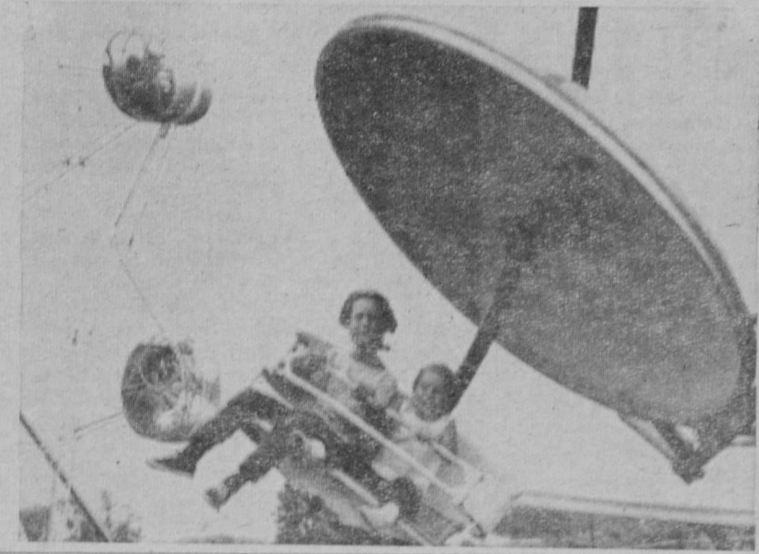


GUIDE for 1973 EXHIBITORS



IOSCO COUNTY FAIR EDITION

MAY 30, 1973



Iosco County Fair — July 25-28

Program County Fair Activities

Gerald Bellen, Whittemore
President, Iosco County Fair
Society
Richard M. Samson, Whittemore
Secretary-Manager

★ ★
Children 12 years and under
Admission Free Each Day



MIDWAY OPEN
TUESDAY, JULY 24—6:00 P. M.
Free gate.

1973 Fair Program

WEDNESDAY, JULY 25

9:00 a. m. to 4:00 p. m.—As-
sembling Exhibits.
1:00 p. m. on—Midway.
7:00 p. m.—Judging 4-H. (Except
livestock).

★ ★
THURSDAY, JULY 26

9:00 a. m.—Judging all 4-H Live-
stock except horses.
2:00 p. m.—Horse Racing.
1:00 p. m. on—Midway.
1:00 p. m.—Judging open class
horses.

★ ★
FRIDAY, JULY 27

9:00 a. m.—Judging 4-H horses.
2:00 p. m.—Horse racing.
Grandstand.
1:00 p. m.—Midway and exhibits.

★ ★
SATURDAY, JULY 28

10:00 a. m.—Games and contests,
all ages.
12:30 p. m.—Parade (Line up at
Fair Grounds).
2:00 p. m.—Horse racing.
4:00 p. m.—Midway.
9:00 p. m.—Exhibits may be picked
up. Premiums will be for-
feited on any exhibits taken
out before 9:00 p. m. Satur-
day.

General Rules

Awards will be paid according
to the record on the judge's books
(Please turn to page 2.)

Premium List

DEPARTMENT A—LIVESTOCK

ENTRY FEE—10% of 1st Prize.

Superintendent—George Erickson.
All exhibitors of horses must notify George Erickson, Whit-
temore, Michigan, 10 days prior to exhibiting date, or space
will not be allowed.

DIVISION I—HORSES
Showmanship—All Breeds—Halter
Section A—Draft Horses

Class	1st	2nd	3rd
1 Stallion, 3 yrs. old or over (reg.)	\$10.00	\$6.00	\$4.00
2 Stallion, 1 yr. old and under 3	10.00	6.00	4.00
3 Foal, under 1 yr., either sex	10.00	6.00	4.00
4 Mare with foal at side	10.00	6.00	4.00
5 Mare, 3 yrs. old or over	10.00	6.00	4.00
6 Mare, 1 yr. old and under 3	10.00	6.00	4.00
7 Gelding, any age	10.00	6.00	4.00
8 Champion	Ribbon Only		
9 Reserve Champion	Ribbon Only		

Section B—Belgian Horses
Premiums same as Section A.
Section C—Saddle Horses

1 Stallion, 3 yrs. old or over (reg.)	10.00	6.00	4.00
2 Stallion, 1 yr. old and under 3 (reg.)	10.00	6.00	4.00
3 Foal, under 1 yr., either sex	10.00	6.00	4.00
4 Mare with foal at side	10.00	6.00	4.00
5 Mare, 3 yrs. old or over	10.00	6.00	4.00
6 Mare, 1 yr. old and under 3	10.00	6.00	4.00
7 Gelding, any age	10.00	6.00	4.00
8 Champion	Ribbon Only		
9 Reserve Champion	Ribbon Only		
10 Reining Class	10.00	6.00	4.00
11 Western Pleasure	10.00	6.00	4.00

Section D—Ponies
Height 52 inches and under.

Class	1st	2nd	3rd
1 Stallion, 3 yrs. old or over (reg.)	10.00	6.00	4.00
2 Stallion, 1 yr. old and under 3 (reg.)	10.00	6.00	4.00
3 Foal, under 1 yr., either sex	10.00	6.00	4.00
4 Mare with foal at side	10.00	6.00	4.00
5 Mare, 3 yrs. old or over	10.00	6.00	4.00
6 Mare, 1 yr. old and under 3	10.00	6.00	4.00
7 Gelding, any age	10.00	6.00	4.00
8 Other	10.00	6.00	4.00
9 Champion	Ribbon Only		
10 Reserve Champion	Ribbon Only		
11 Western Pleasure	10.00	6.00	4.00
12 Champion and Reserve, Western Pleasure	Ribbon Only		

CATTLE

—Rules—

Exhibitors are requested to read carefully rules and regu-
lations covering exhibition of cattle.

Animals to be eligible for Championship awards must have
won first prize in the class in which they have been shown.

Superintendent—Adolph Siegrist.

All exhibitors of the following livestock please notify Adolph
Siegrist, Whittemore, Michigan, 10 days prior to exhibiting date
so that space will be provided.

DIVISION II—DAIRY BREEDS
The ages of cattle in the dairy classes will be computed from
July 1st and the division between Junior and Senior will be
considered January 1st.

Section A—Guernseys—Female			
1 Junior calf	11.00	8.00	6.00
2 Senior calf	11.00	8.00	6.00
3 Junior yearling	11.00	8.00	6.00
4 Senior yearling	11.00	8.00	6.00
5 3 Year old	16.00	14.00	12.00
6 4 Year old	16.00	14.00	12.00
7 Aged cow	16.00	14.00	12.00

Guernseys—Male			
8 Junior calf	11.00	8.00	6.00
9 Senior calf	11.00	8.00	6.00
10 Junior yearling	11.00	8.00	6.00
11 Senior yearling	11.00	8.00	6.00
12 3 Year old	16.00	14.00	12.00
13 Aged bull	16.00	14.00	12.00

Grand Champion—Male, over all breeds	Ribbon		
Reserve Champion—Male, over all breeds	Ribbon		
Grand Champion—Female, over all breeds	Ribbon		
Reserve Champion—Female, over all breeds	Ribbon		
14 Best three females at any age, all bred and owned by exhibitor	14.00	9.00	6.00

15 Dairy herd to consist of 3 females, 2 years or over that have all freshened at least once	8.00	5.00	3.00
16 Pair of bulls, bred and owned by exhibitor	14.00	9.00	6.00
17 Product of dam, to consist of two animals, any age, either sex, the product of one cow	14.00	8.00	6.00

Section B—Holstein Friesian
Premiums same as Section A.

Section C—Jersey
Premiums same as Section A.

Section D—Brown Swiss
Premiums same as Section A.

Section E—Ayrshire
Premiums same as Section A.

Section F—Milking Shorthorns
Premiums same as Section A.

Section G—Red Danish Cattle
Premiums same as Section A.

DIVISION III—BEEF CATTLE

Classes for beef cattle to be based on birth date.
Junior classes for those born from January through April.
Summer classes are from May through August.
Senior classes are from September through December.

Section A—Hereford

Males

1 Bull, 2 years old or over	15.00	12.00	9.00
2 Senior Yearling Bull	14.00	11.00	8.00
3 Junior Yearling Bull	14.00	11.00	8.00
4 Bull Calf, over 4 months under 1 year	9.00	6.00	5.00
Champion Bull	Ribbon		
Reserve Champion Bull	Ribbon		

Females

5 Female, 2 years old or over	15.00	12.00	9.00
6 Senior yearling female	14.00	11.00	8.00
7 Junior yearling female	14.00	11.00	8.00
8 Heifer calf, over 4 months under 1 year	9.00	6.00	5.00
Champion female	Ribbon		
Reserve Champion female	Ribbon		
9 Get of sire, both sexes represented, owned by exhibitor	12.00	9.00	6.00
10 Pair of yearlings, junior or summer bull and female	12.00	9.00	6.00
11 Pair of calves, bull and female	12.00	9.00	6.00
12 Pair of bulls, bred and owned by exhibitor	12.00	9.00	6.00
13 Pair of females, bred and owned by exhibitor	12.00	9.00	6.00

Section B—Angus

Premiums same as Section A.

Section C—Shorthorns

Premiums same as Section A.

Section D—Feeder Cattle

1 Feeder under 600 pounds	14.00	11.00	8.00
2 Feeder over 600 pounds	14.00	11.00	8.00

SWINE and SHEEP

ENTRY FEE—10% of 1st Prize.

Superintendent—Adolph Siegrist.

DIVISION IV—SWINE

—Rules—

Exhibitors are requested to read carefully rules and regu-
lations covering exhibitions of livestock.

1. A Junior pig is under 10 weeks of age.
2. A Senior pig is 10 weeks to six months of age.
3. A Junior Yearling is six months to one year of age.
4. An Aged pig is over one year of age.
5. A breeder's young herd shall consist of one boar and three sows from Senior classes.
6. An exhibitor's herd shall consist of one boar and three sows from Junior Yearling or older classes.
7. A pen of four pigs shall consist of four junior pigs farrowed and raised by exhibitor.
8. No pig shall be entered in two different classes.

Section A—Duroc Jerseys			
Class	1st	2nd	3rd
1. Aged boar pig	12.00	8.00	6.00
2. Junior yearling boar pig	10.00	6.00	4.00
3. Senior boar pig	8.00	4.00	2.00
4. Junior boar pig	8.00	4.00	2.00
5. Aged sow	10.00	6.00	4.00
6. Junior yearling sow	10.00	6.00	4.00
7. Senior sow pig	8.00	4.00	2.00
8. Junior sow pig	8.00	4.00	2.00
9. Exhibitor's herd	10.00	6.00	4.00
10. Breeder's young herd	8.00	4.00	2.00
11. Pen of pigs	8.00	4.00	2.00
12. Sow and litter	12.00	8.00	6.00

(Please turn to page 2.)

(Continued from page 1.)

—Not by the ribbon on exhibit. Premium checks must be cashed within 30 days from date thereof.

Farm displays must be in exhibit by 4:00 p. m. opening day.

Rule 1—Entries close Wednesday, July 25, 1973, 4:00 p. m.

Rule 2—Any person living in Iosco County, 18 years of age, is eligible to vote at the annual meeting.

Rule 3—ENTRY FEE: As listed under each Department.

Rule 4—Premiums are offered and will be awarded on exhibits owned by residents of Iosco, Alcona, Oseoda, Ogemaw and Arenac Counties only.



Rule 5—Exhibits: Exhibits may be eligible for premiums in more than one class if properly qualified.

Rule 6—DECLINING ENTRIES: The management reserves the right to refuse or accept an entry, to cancel any entry and to cancel awards of prizes without claim of damages.

Rule 7—RESPONSIBILITY: The management will not be responsible for any loss, damage, or injury to any animal exhibited, or article destroyed or in any way injured. Each exhibitor will be responsible for an injury that may be occasioned to any person or to the property of any person by any animal owned or exhibited by any exhibitor; and shall indemnify the management against all claims or injury occasioned by any animal owned or exhibited by him, or arising from the acts of negligence of any such exhibit.

Rule 8—STANDARD EXHIBITS: All exhibitors must comply to standard exhibits, which are as follows:

- 2 quarts of wheat.
2 quarts of rye.
2 quarts of oats.
2 quarts of barley.
2 quarts of alfalfa, clover or other grass seed.
10 ears of yellow dent corn.
10 ears of white dent corn.
10 ears of any other.
32 potatoes.
5 garden vegetables except cabbage and vine crops.
2 heads of cabbage.
2 squash, pumpkin or other vine crops.
5 apples, peaches or pears per plate.
3 bunches of grapes.
10 plums per plate.
1 jar of jellies, jams or preserves.
1 jar of canned vegetables, fruits or meats.
1 quart of berries.

Rule 9—In case of only one entry in a class, prizes will be awarded at the discretion of the judge.

Rule 10—In any case where there are fewer entries than premiums offered, prizes will be awarded at the discretion of the judge.

Rule 11—The judge's decision shall be final in all cases.

Rule 12—Each purebred animal must be accompanied by its registration papers in order to be eligible to receive premiums.

Rule 13—All livestock must be known to be free from disease before entering the grounds for exhibition.

MICHIGAN DEPARTMENT OF AGRICULTURE ANIMAL HEALTH DIVISION LANSING, MICHIGAN 48913 HEALTH REQUIREMENTS FOR LIVESTOCK EXHIBITED IN MICHIGAN (Revised January 1969) GENERAL

Requirements provided in Michigan Department of Agriculture Regulation Nos. 110, 117, 133, and Section 10 and 21b of Act No. 181, Public Acts of 1919, as amended. 1. Livestock affected with a communicable disease must not be exhibited at, nor brought to fairs. 2. At least seven days before an exhibition of livestock, the buildings and yards shall be thoroughly cleaned of all manure, litter and unused hay and straw. Following such cleaning, all structures shall

(Please turn to page 3.)

(Continued from page 1.)

Section B—Chester White Premiums same as Section A.

Section C—Poland China Premiums same as Section A.

Section D—Hampshire Premiums same as Section A.

Section E—Yorkshire Premiums same as Section A.

Section F—Spots Premiums same as Section A.

Section G—Crossbreds Premiums same as Section A.

Section H—All other Breeds Premiums same as Section A.

Section I—Market Hogs 180 lbs. - 240 lbs.

Table with 4 columns: Class, 1st, 2nd, 3rd. Rows include Pen of 3 mixed, Single barrow, Champion boar, Reserve champion boar, Champion sow, Reserve champion sow.

DIVISION V—SHEEP

—Rules—

Exhibitors are requested to read carefully rules and regulations covering exhibitions of livestock.

Age of sheep is reckoned from January 1.

A flock in all classes shall consist of one ram, any age; one ewe, two years old or over; one ewe, one year old and under two; and one ewe under one year.

Pen of four ewes for replacement herd.

Section A—Shropshire

Table with 4 columns: Class, 1st, 2nd, 3rd. Rows include Ram, 2 years old and over; Ram, 1 year old and under 2; Ram lamb, under 1 year; Ewe, 2 years old and over; Ewe, 1 year old and under 2; Ewe lamb under 1 year; Flock; Pen of 4 ewe lambs for replacement herd.

Champion ram, over all breeds and ages ribbon; Reserve Champion ram, over all breeds and ages ribbon; Champion ewe, over all breeds and ages ribbon; Reserve champion ewe, over all breeds and ages ribbon.

Section B—Cheviot Premiums same as Section A.

Section C—Delaune Premiums same as Section A.

Section D—Suffolk Premiums same as Section A.

Section E—Corriedale Premiums same as Section A.

Section F—Hampshire Premiums same as Section A.

Section G—Lincoln Premiums same as Section A.

Section H—Oxfords Premiums same as Section A.

Section I—Rambouillet Premiums same as Section A.

Section J—Southdown Premiums same as Section A.

Section K—Cotswold Premiums same as Section A.

Section L—Fat Lambs, Pen of Three, All breeds

Table with 4 columns: Class, 1st, 2nd, 3rd. Row: Best pen of lambs.

Section M—Fat Lamb

Table with 4 columns: Class, 1st, 2nd, 3rd. Row: Best individual fat lamb, all breeds.



DEPARTMENT B—POULTRY

ENTRY FEE—10% of 1st Prize. Superintendent—Perry Shellenbarger.

STATE OF MICHIGAN DEPARTMENT OF AGRICULTURE BUREAU OF ANIMAL INDUSTRY LANSING, MICHIGAN

Department of Agriculture Regulation No. 133 Regulation Relating to the Public Exhibition of Poultry

By virtue of the authority provided by Act 181, Public Acts of 1919, as amended, the following rules and regulations are hereby established:

- 1. Feed and water containers provided for exhibition coops shall be new or properly cleaned.
2. Feed or water containers from which birds have eaten or drunk must be refilled so as not to contaminate the common supply of feed and water.
3. Exhibition coops must be thoroughly cleaned and disinfected, both prior to and following such exhibition.
4. Exhibition coops must be so constructed and placed as to provide adequate light for proper inspection of poultry for evidence of transmissible diseases.
5. Litter for exhibition coops must be of clean material and be renewed daily or oftener as needed.
6. Shipping crates used in shipment of birds by common carrier may not be used as exhibition coops.
7. No bird shall be handled by anyone other than the attendant and the judge after they have been placed in ex-

hibition coops.

It is recommended that all birds exhibited at fairs and poultry shows shall have been vaccinated against Infectious Bronchitis and Newcastle Disease thirty days or more prior to the date of the exhibition or show.

—Rules—

Exhibitors are requested to read carefully rules and regulations covering exhibition of poultry.

All exhibits shall be (a) purebred (b) cross bred from purebred parents.

All birds showing any general disqualifications according to the Standard of Perfection shall receive no award.

Provided the birds are typical of the breeds which they represent, the placing of awards shall depend upon the following:

- A. Pullets: 1. Rapidity of growth. 2. Depth of pigment. 3. Uniformity of shape and size. 4. Promise of egg production. 5. Absence of defects and disqualifications.
B. Mature Birds (Hens): 1. Degree of bleaching. 2. Condition of abdomen (spread and pliability). 3. Absence of new primary wing feathers. 4. Alertness of head and eyes. 5. Body weight, conformation and fitness. 6. Absence of defects and disqualifications.

It is suggested, especially for fairs held late in September and October, that all birds exhibited go directly from the Fair to market for slaughter so that none of them will be taken back to the farm. The reason for this precaution is that the birds may take back some disease to the farmer and injure his egg production of his farm flock, if such disease is infectious and of the type which will lower his egg production.

A pen entry shall consist of two females and one male. (Classifications: Cock, Cockerel, Hen, Pullet.)

DIVISION I—LARGE FOWL

Premiums: (Premiums listed Classes 1 thru 6 shall apply to all sections listed thereafter.)

Table with 4 columns: Class, 1st, 2nd, 3rd. Rows include Cock, Hen, Cockerel, Pullet, Old Trio, Young Trio.

Section—American Variety

- 1 Plymouth Rocks, Barred
2 Plymouth Rocks, Buff
3 Plymouth Rocks, White
4 Plymouth Rocks, Silver Pen
5 Plymouth Rocks, Partridge
6 Plymouth Rocks, Columbian
7 Wyandotte, White
8 Wyandotte, Silver laced
9 Wyandotte, Golden
10 Wyandotte, Buff
11 Wyandotte, Black
12 Wyandotte, Partridge
13 Wyandotte, Silver Pen
14 Wyandotte, Columbian
15 Javas, Black
16 R. I. Reds, Single Comb
17 R. I. Reds, Rose Comb
18 Jersey Giants, Black
19 Jersey Giants, White
20 New Hampshire, Red

Section—Asiatic Variety

- 21 Brahmas, Light
22 Brahmas, Dark
23 Brahmas, Buff
24 Cochins, Buff
25 Cochins, Partridge
26 Cochins, Black
27 Cochins, White
28 Langshans, Black
29 Langshans, White

Section—Mediterranean Variety

- 30 Leghorns, S. C. White
31 Leghorns, R. C. White
32 Leghorns, S. C. Dark Brown
33 Leghorns, S. C. Light Br.
34 Leghorns, R. C. Dark Br.
35 Leghorns, R. C. Light Br.
36 Leghorns, S. C. Buff
37 Leghorns, R. C. Buff
38 Leghorns, S. C. Black
39 Leghorns, R. C. Black
40 Leghorns, S. C. Silver
41 Leghorns, R. C. Silver
42 Leghorns, S. C. Columbian
43 Leghorns, S. C. Red
44 Minorcas, S. C. Black
45 Minorcas, R. C. Black
46 Minorcas, S. C. White
47 Minorcas, R. C. White
48 Minorcas, S. C. Buff
49 White Face Black Spanish
50 Blue Andalusians
51 Anconas, S. C. Mottled
52 Anconas, R. C. Mottled
53 Buttercups

Section—English Variety

- 54 Dorkings, White
55 Dorkings, Silver Gray
56 Dorkings, Colored
57 Red Caps
58 Orpingtons, S. C. Buff
59 Orpingtons, S. C. Black
60 Orpingtons, S. C. White
61 Australorps, Black
62 Australorps, White
63 Cornish, Dark
64 Cornish, White
65 Cornish, Buff
66 Cornish, White Laced Red
67 Sussex, Speckled
68 Sussex, Light

Section—Hamburg Variety

- 69 Hamburg, Silver Spangled
70 Hamburg, Gold Spangled
71 Hamburg, Gold Penciled
72 Hamburg, White
73 Hamburg, Black
74 Hamburg, Silver Penciled

Section—Polish Variety

- 75 Polish, White Crested Black
76 Polish, Bearded Golden
77 Polish, Bearded Silver
78 Polish, Bearded Buff Laced
79 Polish, Bearded White
80 Polish, Non-Bearded Gold
81 Polish, Non-Bearded Silver
82 Pol. Non-Beard. Buff Laced
83 Polish, Non-Bearded White
84 Polish, White Crested Blue

Section—French Variety

- 85 Houdans, Mottled
86 Houdans, White
87 Crevecoeurs
88 Faverolles, Salmon
89 Faverolles, White

Section—Miscellaneous Variety

- 90 Yokohomas
91 Orloffs
92 Frizzle
93 Sultoon
94 Jungle Fowl
95 Araucana Tufted
96 Araucana Rumpless
97 Araucana Plain

Section—Oriental Game Variety

- 98 Black Sumatra
99 Cubalaya
100 Malay

Section—Exhibition Variety Game

- 101 Games, Black Breasted Red
102 Games, Red Pyle
103 Games, Silver Duckwing
104 Games, Birchen
105 Aseel

Section—Continental Variety

- 106 Lakenvelde
107 Campine, Silver
108 Campine, Golden

DIVISION II—BANTAMS

(Single Classes—2 or more exhibits in class) Premiums: (Premiums listed classes 1 thru 7 shall apply to all sections listed thereafter.)

Table with 4 columns: Class, 1st, 2nd, 3rd. Rows include Cock, Hen, Cockerel, Pullet, Old Trio, Young Trio, Display (Cock, Hen, Cockerel, Pullet and Trio).

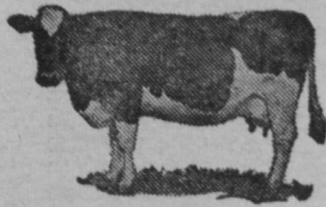
Ribbons and/or trophies only

(Please turn to page 3.)

(Continued from page 2.)

be thoroughly sprayed with an approved disinfectant. After cleaning and disinfection, no livestock shall be placed in such pens until admitted for exhibition.

3. All livestock from other states, provinces or countries must be accompanied by an official interstate health certificate approved by the livestock sanitary official of the state of origin. Such animals shall meet Michigan requirements for importation into Michigan.

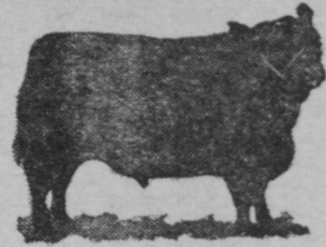


CATTLE

Cattle may not be exhibited from a quarantined premise or a quarantined area except upon permit from the Director of Agriculture or his authorized agent.

All cattle must be identified by ear tag, tattoo, or registration number.

Cattle from other states, provinces or countries must be accompanied by an official interstate health certificate approved by the livestock sanitary official of the state of origin certifying that the animals meet Michigan requirements for importation.



OUT OF STATE FEEDER CATTLE

Feeder cattle originating in other states being held in quarantine on feeder permits may qualify for exhibition in the following manner:

1. Steers must pass a test for tuberculosis and shall have been removed from the feed lot and held separate from the quarantined feeders after having been tested. Such steers must be accompanied by copy of test chart ADE Form 22.

2. Male and female feeder cattle must be tested for tuberculosis within 90 days of opening day and animals over one year of age must pass a test for brucellosis within 90 days of the opening day of the fair or exhibition and shall have been removed from the feed lot and held separate from the quarantined feeders after having been tested.



SWINE

Requirements provided in Michigan Department of Agriculture Regulation No. 117:

1. All swine for exhibition must be free from infectious and contagious disease. 2. Native swine are not required to be vaccinated against hog cholera. 3. No swine shall be presented for exhibition purposes which have originated from any garbage feeding premise or that are in a quarantined area for the prevention of the spread of vesicular exanthema; or if a quarantine is on the premise for any reason (except upon a permit from the Director of Agriculture or his authorized agent.)

POULTRY

Requirements provided in Michigan Department of Agriculture Regulation No. 133:

1. Feed and water container provided for exhibition coops shall be new or properly cleaned. 2. Feed or water containers from which birds have eaten or drunk

(Please turn to page 4.)

(Continued from page 2.)

- 1 Plymouth Rock Buff 61 Games, Modern Black Breasted Red
2 Plymouth Rock Barred 62 Games, Modern Golden Duckwing
3 Plymouth Rock White 63 Games, Modern Silver Duckwing
4 Plymouth Rock Partridge 64 Games, Modern Birchen
5 Plymouth Rock Columbian 65 Games, Modern Red Pyles
6 Plymouth Rock Penciled 66 Games, Modern White
7 Wyandottes White 67 Games, Modern Black
8 Wyandottes Black 68 Games, Modern Blue
9 Wyandottes Partridge 69 Games, Old English
10 Wyandottes Silver Penciled 70 Games, O. E. Silver
11 Wyandottes Buff Black Breasted Red
12 Wyandottes Silver Laced 71 Games, O. E. White
13 Wyandottes Columbian 72 Games, Old English Black
14 Wyandottes Golden Duckwing 73 Games, Old Eng. Spangled
15 Brahmas, Light 74 Games, Old English Blue
16 Brahmas, Dark 75 Games, O. E. Brown Red
17 Brahmas, Buff 76 Games, O. E. Red Pyle
18 Cochins, Black 77 Games, O. E. Wheat
19 Cochins, Buff 78 Malays, Black Breasted Red
20 Cochins, White 79 Rhode Island Red, S. C.
21 Cochins, Blue 80 Rhode Island Red, R. C.
22 Cochins, Partridge 81 Hamburgs, Silver Spangled
23 Cochins, Barred 82 Hamburgs Golden Spangled
24 Cochins, Mottled 83 Hamburgs Silver Pencil
25 Cochins, Birchen 84 Hamburgs Golden Pencil
26 Cochins, Brown Red 85 Polish, Wh. Crested Black
27 Cochins, Silver Penciled 86 Polish, Bearded Golden
28 Cochins, Red 87 Polish, Bearded Silver
29 Cochins, Columbian 88 Polish, Bearded Buff Laced
30 Leghorns, S. C. White 89 Polish, Bearded White
31 Leghorns, R. C. White 90 Polish, Non-Bearded Gld
32 Leghorns, S. C. Brown 91 Polish, Non-Bearded Silver
33 Leghorns, R. C. Buff 92 Pol. Non-Beard. Buff Laced
34 Leghorns, S. C. Buff 93 Polish, Non-Bearded White
35 Cornish, Dark 94 Polish, White Crested Blue
36 Cornish, White 95 Lakenvelders
37 Cornish, White Laced Red 96 Anconas, S. C. Mottled
38 Sebright Golden 97 Anconas, R. C. Mottled
39 Sebright Silver 98 Sultans
40 Rose Combs Black 99 Crevecoeurs
41 Rose Comb Blue 100 Belgian Black
42 Rose Comb White 101 Belgian Quail
43 Japanese Black 102 Booted Black
44 Japanese Black Tail White 103 Booted White
45 Japanese White 104 Booted Mottled
46 Japanese Mottled 105 Sumatra
47 Japanese Gray 106 Faverolles, Salmon
48 Japanese Black Tailed Buff 107 Mottled Belgian Bearded
49 Mille Fleurs Bearded 108 Frizzle Black Feather Leg
50 Mille Fleurs Non-Bearded 109 Frizzle White Feather Leg
51 Silkies White Bearded 110 Frizzle Barred Feather Leg
52 Silkies White Non-Bearded 111 Frizzle Black Clean Leg
53 Silkies Black Bearded 112 Frizzle White Clean Leg
54 Silkies Black Non-Bearded 113 Frizzle Barred Clean Leg
55 Silkies Partridge Bearded 114 Frizzle Mile Fleur
56 Silk. Partridge Non Bearded 115 Mottled Houdan
57 Silkies Buff Bearded
58 Silkies Buff Non-Bearded
59 Silkies Blue Bearded
60 Silkies Blue Non-Bearded

DIVISION III—TURKEYS

Table with columns for Class, 1st, 2nd, 3rd. Includes Old Tom, Old Hen, Young Tom, Young Hen.

Table with columns for Mammoth Bronze, Narragansette, White Holland, Bourbon Red, Bells Ville, Any other breed.

DIVISION IV—DUCKS

Table with columns for Class, 1st, 2nd, 3rd. Includes Old Drake, Young Drake.

Table with columns for White Pekins, Colored Rouens, Dark Muscovys, White Muscovys, Fawn White Runners, Any other breed.

DIVISION V—GEESE

Table with columns for Class, 1st, 2nd, 3rd. Includes Old Gander, Old Goose, Young Gander, Young Goose.

Table with columns for Toulouses, Embdens, Africans, Brown Chinas, White Chinas, Any other breed.

DIVISION VI—CAPONS

Table with columns for 1st, 2nd. Best Capon hatched this year.

DIVISION VII—PIGEONS

Table with columns for Class, 1st, 2nd, 3rd. Premium for single birds in this class. Includes Old Cock, Old Hen, Young Cock, Young Hen.

Section B

Table with columns for Fan Tails, Kings, Homers, Any other breed. Includes Old Cock, Old Hen, Young Cock, Young Hen.

DIVISION VIII—RABBITS

Table with columns for Class, 1st, 2nd, 3rd. Includes Buck, 6 months old or over, Doe, 6 months old or over, Buck, under 6 months, Doe, under 6 months, Doe and litter.

Section B

Table with columns for New Zeland White, New Zeland Reds, Chinchilla, Dutch, Belgian Hare, Any other breed. Includes Buck 6 Mos. or over, Doe 6 Mos. or over, Buck under 6 Mos., Doe under 6 Mos., Doe and Litter.

DEPARTMENT C—FARM PRODUCE

FARM PRODUCE, VEGETABLES and FRUIT. .RY.—10 cents for each item. Superintendent—John Dooley

DIVISION I—FARM PRODUCE

Table with columns for Class, 1st, 2nd, 3rd. Does not have to be this year's seed. Includes Red Wheat, White Wheat, Oats, Barley, Rye, Buckwheat, Red Clover, Alsike Clover, Alfalfa, Sweet Clover, Vetch, White Pea Beans, Soy Beans, Cranberry Beans, Red Kidney Beans, Ladino Clover, Speltz, Brome Grass, Other Variety not listed.

DIVISION II—CORN

Table with columns for Class, 1st, 2nd, 3rd. Does not have to be this year's corn. Includes Dent, Yellow (hybrid), Dent, Yellow (Open pollinated), Dent, White, Flint corn, Sweet Corn, Pop Corn (rice), Pop Corn (any other variety), Any other corn.

DIVISION III—POTATOES

Table with columns for Class, 1st, 2nd, 3rd. Includes Russet Rural, Late White Potatoes, Early White Potatoes, Early Red Potatoes, Any other variety.

DIVISION IV—SHEAVES

Table with columns for Class, 1st, 2nd, 3rd. 3 inch diameter. Includes Wheat, Rye, Oats, Barley, Five stalks of Corn, Five stalks Sweet Corn, Brome, Speltz, Other Variety not listed.

DIVISION V—GARDEN VEGETABLES

Table with columns for Class, 1st, 2nd, 3rd. Includes Beans, green, Beans, pole, Beans, wax, Broccoli, Brussels Sprouts, Cabbage, Carrots, Cauliflower, Celery, Citron, Cucumbers, sliced, Corn, sweet, Dill, Egg Plant, Garlic, Gourds, Kohl Rabi, Lettuce, head, Lettuce, leaf, Muskmelon, Onions, dry, Onions, green.

(Please turn to page 4.)

(Continued from page 3.)

must be refilled so as not to contaminate the common supply of feed or water. Feed or water containers may not be removed from the exhibition coops except for the purpose of cleaning.

3. Exhibition coops must be thoroughly cleaned and disinfected both prior to and following such exhibition.

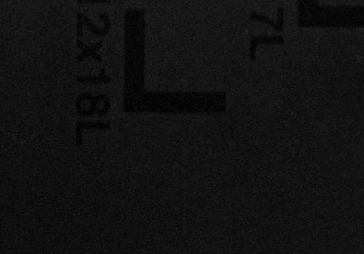
4. Exhibition coops must be so constructed and placed as to provide adequate light for proper inspection of poultry for evidence of transmissible diseases.

5. Litter for exhibition coops must be of clean material and be renewed daily or oftener as needed.

6. Shipping crates used in shipment of birds by common carrier may not be used as exhibition coops. Shipping crates shall be cleaned and disinfected after birds have been removed for exhibition and before being used again.

7. No bird shall be handled by anyone other than the attendant and the judge after they have been placed in exhibition coops.

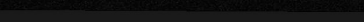
It is recommended that all birds exhibited at fairs and poultry shows shall have been vaccinated against Infectious Bronchitis and Newcastle Disease thirty days or more prior to the date of the exhibition or show.



HORSES

Requirements provided in Michigan Department of Agriculture Regulation No. 117.

All horses for exhibition must be free from infectious and contagious disease.



SHEEP

Requirements provided in Michigan Department of Agriculture Regulation No. 117.

All sheep for exhibition must be free from infectious and contagious disease.

Altensburg Amusement Attractions, Inc. HAS SPECIAL REDUCED PRICES ON RIDES EACH DAY

Tickets will be 35 cents each or five for \$1.00 from 12:00 P. M. to 5:00 P. M.

A BIKE TO BE GIVEN EACH DAY

Suggestion Box

AT OFFICE TO HELP MAKE A BETTER FAIR ALL IDEAS WELCOMED

(Continued from page 3.)

Table with 3 columns: Item, 1st, 2nd, 3rd. Items include Parsley, Parsnips, Peas, Peppers, etc.

DIVISION VI-APPLES. Table with 3 columns: Class, 1st, 2nd, 3rd. Items include Five Harvest Apples, Five Autumn Apples, etc.

DIVISION VII-PEARS. Table with 3 columns: Class, 1st, 2nd, 3rd. Item: Five Pears, any standard variety.

DIVISION VIII-PLUMS. Table with 3 columns: Class, 1st, 2nd, 3rd. Item: Ten Plums, any standard variety.

DIVISION IX-GRAPES. Table with 3 columns: Class, 1st, 2nd, 3rd. Item: Plate of Grapes (3 bunches).

DIVISION X-PEACHES. Table with 3 columns: Class, 1st, 2nd, 3rd. Item: Five Peaches, any standard variety.

DIVISION XI-BERRIES. Table with 3 columns: Class, 1st, 2nd, 3rd. Items include Raspberries, Strawberries, etc.

DIVISION XII-EGGS. Table with 3 columns: Class, 1st, 2nd, 3rd. Items include Thirteen Eggs (white) hen, etc.

DIVISION XIII-SPECIAL. Table with 3 columns: Class, 1st, 2nd, 3rd. Item: Must contain farm or garden produce.

DEPARTMENT D-FLOWERS and PLANTS. Table with 3 columns: Class, 1st, 2nd, 3rd. Item: Artistic arrangement.

DIVISION I-CUT FLOWERS. Table with 3 columns: Class, 1st, 2nd, 3rd. Item: Asters-Powderpuff.

Table with 3 columns: Class, 1st, 2nd, 3rd. Items include Asters, Bachelor Buttons, Cosmos, etc.

Table with 3 columns: Item, 1st, 2nd, 3rd. Items include Zinnia-Dwarf, Roses, etc.

DIVISION II-POTTED PLANTS

Table with 3 columns: Class, 1st, 2nd, 3rd. Items include Ammaryllis, African Violets, etc.

DIVISION III-SPECIAL ARRANGEMENTS

Table with 3 columns: Class, 1st, 2nd, 3rd. Items include Silver or Golden Anniversary, Valentine, etc.

DEPARTMENT E-HOME ECONOMICS

Table with 3 columns: Class, 1st, 2nd, 3rd. Item: Unusual arrangement with title.

DIVISION I-BAKING

Rules: 1. All exhibits to be entered by 4 o'clock on opening day of fair.

2. All exhibits must be work of the exhibitor.

3. The exhibits will be judged and money paid according to placings listed.

4. Exhibitors to furnish own plate and saran wrap where needed.

5. Not responsible for exhibits after 9:00 p. m. Saturday.

Table with 3 columns: General Appearance, Size, Shape, etc.

Section A-Bread and Rolls

Table with 3 columns: Class, 1st, 2nd, 3rd. Items include White bread, Whole Wheat bread, etc.

(Please turn to page 5.)



FREE!

Exhibit

Space

in

Connection

with

Midway

IOSCO

COUNTY

FAIR

MAKE

the 1973

IOSCO CO.

FAIR

the Year to

Remember!

(Continued from page 4.)

4 Nut	2.50	1.50	1.00
5 Date	2.50	1.50	1.00
6 Cranberry	2.50	1.50	1.00
7 Pumpkin	2.50	1.50	1.00
8 Other variety not listed	2.50	1.50	1.00

Section B—Cake

Cake Score Card:	25
Appearance	10
Size—so as to be cut conveniently	10
Shape—regular, evenly raised, no cracks, hollows or bulges	15
Surface—unfrosted, an even light golden brown; frosting glossy but not granular; stocky, not highly colored	
Flavor	35
Characteristics—not too strong of spices, extract or soda	
Lightness	10
Even distribution of air cells, feathery appearance, no tunnels	
Texture	30
Fine and even grain, moist and elastic, not tough or harsh or crumbly	20
Tender, easily broken. Color characteristic of kind of cake	10

Class	1st	2nd	3rd
1 Angel Food (unfrosted)	2.00	1.50	1.00
2 Sponge	2.00	1.50	1.00
3 Chiffon	2.00	1.50	1.00
4 Fruit	2.00	1.50	1.00
5 Devil's Food	2.00	1.50	1.00
6 Spice	2.00	1.50	1.00
7 Applesauce	2.00	1.50	1.00
8 White Cake	2.00	1.50	1.00
9 Banana	2.00	1.50	1.00
10 Date Cake	2.00	1.50	1.00
11 Maraschino Nut	2.00	1.50	1.00
12 Orange	2.00	1.50	1.00
13 Jelly Cake	2.00	1.50	1.00
14 Cup cake (exhibit 6)	2.00	1.50	1.00
15 Upside Down cake	2.00	1.50	1.00
16 Chocolate Cake	2.00	1.50	1.00
17 Butter Cakes	2.00	1.50	1.00
18 Other variety not listed	2.00	1.50	1.00

Section C—Cookies and Doughnuts

Exhibit not less than six to a plate.	100
Score Card:	
Appearance	30
Size—not too large (3 inches)	
Shape—uniform, not too thick	
Surface—delicate brown	
Flavor	35
Delicate—characteristic. Filling, if any, suit type	
Texture	35
Depends upon the type of cookies. Rolled cookies should be crisp; fruit cookies tender and moist; doughnuts tender and not soaked with fat.	

Class	1st	2nd	3rd
1 Filled Cookies	1.50	1.00	.50
2 Cherry Winks	1.50	1.00	.50
3 Sugar Cookies	1.50	1.00	.50
4 Molasses	1.50	1.00	.50
5 Oatmeal	1.50	1.00	.50
6 Sour Cream	1.50	1.00	.50
7 Ice Box	1.50	1.00	.50
8 Hermits	1.50	1.00	.50
9 Peanut Butter	1.50	1.00	.50
10 Chocolate Chip	1.50	1.00	.50
11 Doughnuts	1.50	1.00	.50
12 Fried Cakes	1.50	1.00	.50
13 Pinwheel Cookies	1.50	1.00	.50
14 Drop Cookies	1.50	1.00	.50
15 Brownies	1.50	1.00	.50
16 Decorated Cookies	1.50	1.00	.50
17 Cereal Cookies	1.50	1.00	.50
18 Pineapple	1.50	1.00	.50
19 Date Bars	1.50	1.00	.50
20 Rolled Cookies	1.50	1.00	.50
21 Other variety not listed	1.50	1.00	.50

Section D—Pies

Score Cards: (One Crust and Two Crusts)	20
Appearance	
Color—delicately even golden brown. Surface should be smooth, not wrinkled or cracked.	
Crust	40
Should be thin, crisp, flaky. Texture: Tender and light not thick, tough or doughy	20
Flavor: Sweet, not rancid, thoroughly baked, not soggy or burned	20
Filling	40
Flavor—characteristic, pleasing not over or under sweetened or spiced	20
Consistency—custards should be thoroughly cooked, thick and smooth. Not thin, watery, lumpy	20
Filling should not be overcooked. Meringue should be light, tender, thoroughly cooked, not less than one-half inch thick and slightly sweet.	

Class	1st	2nd	3rd
1 Apple	2.00	1.50	1.00
2 Berry—Black or Raspberry	2.00	1.50	1.00
3 Cherry	2.00	1.50	1.00
4 Raisin	2.00	1.50	1.00
5 Custard	2.00	1.50	1.00
6 Mincemeat	2.00	1.50	1.00
7 Pumpkin	2.00	1.50	1.00
8 Lemon	2.00	1.50	1.00
9 Cream	2.00	1.50	1.00
10 Chiffon	2.00	1.50	1.00
11 Huckleberry	2.00	1.50	1.00
12 Other Berry	2.00	1.50	1.00
13 Other variety not listed	2.00	1.50	1.00

Section E—Special Decorated Cakes

ENTRY FEE—50 cents.			
Class	1st	2nd	3rd
1 Anniversary	5.00	3.00	2.00
2 Valentine or St. Patrick's Day	5.00	3.00	2.00
3 Easter or Thanksgiving	5.00	3.00	2.00
4 Christmas	5.00	3.00	2.00
5 Wedding	5.00	3.00	2.00
6 Shower Cake	5.00	3.00	2.00
7 Birthday	5.00	3.00	2.00
8 Unusual with title	5.00	3.00	2.00

DIVISION II—CANNING

Does not need to be this year's canning
Exhibit must consist of 1 glass (colorless preferred) in each class. Jars to be opened at Judges' discretion.

Canning Score Card:	25
Appearance	
Shape	5
Clearness	10
Color-natural	10
Pack	25
Arrangement	10
Proportion of product and liquid	15
Contents	50
Flavor	20
Texture	20
Juice	20

Section A—Canned Fruit

Class	1st	2nd	3rd
1 Blackberries	1.50	1.00	.50
2 Blueberries	1.50	1.00	.50
3 Red Raspberries	1.50	1.00	.50
4 Black Raspberries	1.50	1.00	.50
5 Strawberries	1.50	1.00	.50
6 Apricots	1.50	1.00	.50
7 Rhubarb	1.50	1.00	.50
8 Pineapple	1.50	1.00	.50
9 Cherries—Sweet	1.50	1.00	.50
10 Cherries—Sour	1.50	1.00	.50
11 Plums	1.50	1.00	.50
12 Peaches	1.50	1.00	.50
13 Pears	1.50	1.00	.50
14 Applesauce	1.50	1.00	.50
15 Other variety not listed	1.50	1.00	.50

Section B—Canned Vegetables

Class	1st	2nd	3rd
1 Corn	1.50	1.00	.50
2 Lima Beans	1.50	1.00	.50
3 Green Beans	1.50	1.00	.50
4 Yellow Beans	1.50	1.00	.50
5 Beets	1.50	1.00	.50
6 Peas	1.50	1.00	.50
7 Carrots	1.50	1.00	.50
8 Cauliflower	1.50	1.00	.50
9 Carrots and Peas	1.50	1.00	.50
10 Tomatoes	1.50	1.00	.50
11 Soup Mixture	1.50	1.00	.50
12 Pumpkin	1.50	1.00	.50
13 Spinach	1.50	1.00	.50
14 Asparagus	1.50	1.00	.50
15 Hot Peppers	1.50	1.00	.50
16 Sweet Peppers	1.50	1.00	.50
17 Other variety not listed	1.50	1.00	.50

Section C—Meats

Does not have to be this year's canning	
Exhibit to consist of 1 glass quart jar or pint jar.	
Meat Score Card:	
Appearance—shape, clearness, color	25
Pack—arrangement, uniformity, liquid	25
Contents—flavor, texture	50

Class	1st	2nd	3rd
1 Pork	1.50	1.00	.50
2 Beef	1.50	1.00	.50
3 Chicken	1.50	1.00	.50
4 Rabbit	1.50	1.00	.50
5 Sausage	1.50	1.00	.50
6 Fish	1.50	1.00	.50
7 Other variety not listed	1.50	1.00	.50

Section D—Preserves

Does not have to be this year's canning	
Score Card for Preserves:	
Appearance	25
Pack	25
Container—size, shape, neatness, preservation	
Contents	50
Consistency, Flavor, Syrup.	
A preserve is one in which the fruit or piece of fruit remain whole, tender, clear and plump in a thick transparent syrup.	
Exhibit to consist of 1 glass pint jar in each class.	

Class	1st	2nd	3rd
1 Blackberry	1.50	1.00	.50
2 Raspberry	1.50	1.00	.50
3 Strawberry	1.50	1.00	.50
4 Cherry	1.50	1.00	.50
5 Peach	1.50	1.00	.50
6 Pear	1.50	1.00	.50
7 Watermelon	1.50	1.00	.50
8 Tomato	1.50	1.00	.50
9 Other variety not listed	1.50	1.00	.50

Section E—Conserves and Jams

Exhibit to consist of 1 glass in each class.			
Class	1st	2nd	3rd
1 Raspberry	1.50	1.00	.50
2 Strawberry	1.50	1.00	.50
3 Blackberry	1.50	1.00	.50
4 Plum	1.50	1.00	.50
5 Peach	1.50	1.00	.50
6 Grape	1.50	1.00	.50
7 Currant	1.50	1.00	.50
8 Cherry	1.50	1.00	.50
9 Other variety not listed	1.50	1.00	.50

Section F—Jelly

Exhibit shall consist of 1 jelly glass with top.	
Score Card for Jellies:	
Appearance	25
Pack	25
Container condition—freedom from mold or fermentation.	
Contents	50
Flavor—tartness, characteristic of fruit. Texture should hold its shape; tender.	

Class	1st	2nd	3rd
1 Currant	1.50	1.00	.50
2 Apple	1.50	1.00	.50
3 Crab Apple	1.50	1.00	.50
4 Grape	1.50	1.00	.50

(Please turn to page 6.)



**PLAN YOUR
EXHIBITS
NOW!**

«»
**Special Emphasis
has been Placed**

**on
Arts
Crafts
Antiques
Historical
Items**

**You Can Do
Your Part by
Entering Exhibits**

(Continued from page 5.)

5 Raspberry	1.50	1.00	.50
6 Strawberry	1.50	1.00	.50
7 Blackberry	1.50	1.00	.50
8 Plum	1.50	1.00	.50
9 Cherry	1.50	1.00	.50
10 Other variety not listed	1.50	1.00	.50

Section G—Juices

Exhibit to consist of 1 glass quart jar.			
Class	1st	2nd	3rd
1 Tomato	1.00	.75	.50
2 Grape	1.00	.75	.50
3 Apple	1.00	.75	.50
4 Berry	1.00	.75	.50
5 Other variety not listed	1.00	.75	.50

Section F—Pickles

Exhibit to consist of 1 glass quart jar or 1 pint jar.			
Score Card for Pickles:			
Does not have to be this year's canning			
Flavor—Savory, neither too sweet nor too sour			50
Uniformity			25
Pack			10
Firmness			15

Class			
1 Mustard Pickles	1.50	1.00	.50
2 Beet Pickles	1.50	1.00	.50
3 Sweet Cucumber Pickles	1.50	1.00	.50
4 Sour Cucumber Pickles	1.50	1.00	.50
5 Bean Pickles	1.50	1.00	.50
6 Dill Pickles	1.50	1.00	.50
7 Bread and Butter Pickles	1.50	1.00	.50
8 Chunk Pickles	1.50	1.00	.50
9 Mixed Pickles	1.50	1.00	.50
10 Onion Pickles	1.50	1.00	.50
11 Tomato Pickles	1.50	1.00	.50
12 Crab Apple Pickles	1.50	1.00	.50
13 Peach Pickles	1.50	1.00	.50
14 Pear Pickles	1.50	1.00	.50
15 Watermelon Pickles	1.50	1.00	.50
16 Curr's Pickles	1.50	1.00	.50
17 Other variety not listed	1.50	1.00	.50

Section G—Relishes

Exhibit to consist of 1 glass pint jar.			
Class	1st	2nd	3rd
1 Raw Relish	1.50	1.00	.50
2 Corn	1.50	1.00	.50
3 Cranberry	1.50	1.00	.50
4 Chow Chow	1.50	1.00	.50
5 Chili Sauce	1.50	1.00	.50
6 Catsup	1.50	1.00	.50
7 Pepper	1.50	1.00	.50
8 Cucumber	1.50	1.00	.50
9 Sauerkraut	1.50	1.00	.50
10 Beet	1.50	1.00	.50
11 Other variety not listed	1.50	1.00	.50

Section H—Miscellaneous

Class			
1 Pint Maple Syrup	2.50	2.00	1.00
2 Pound Maple Sugar	2.50	2.00	1.00
3 Pound Honey in Comb	2.50	2.00	1.00
4 Pound Strained Honey	2.50	2.00	1.00
5 Dehydrated Foods	2.50	2.00	1.00
6 Mince-meat	2.50	2.00	1.00
7 Soap	2.50	2.00	1.00
8 Pound Homemade Fudge	2.50	2.00	1.00
9 Pound Homemade Divinity	2.50	2.00	1.00
10 Pound Other Homemade Candy	2.50	2.00	1.00

DEPARTMENT F—DOMESTIC ARTS

ENTRY FEE—10 cents for each entry, except SPECIAL CROCHET Superintendent—Mrs. Gerald Ruckle.

All entries to be exhibited must be made within the last three years. NO ENTRY to be exhibited more than three years in succession.

All entries are to be entered by 4 o'clock on opening day of fair, and removed at 9 o'clock p. m. the last day of fair. Not responsible for exhibits after 9 o'clock Saturday.

Placing left to discretion of judges.

Score Card:	
Workmanship	50
General Appearance	30
Quality of Material	20
<hr/>	
	100

DIVISION I—SEWING MACHINE

Wearing Apparel

Class	1st	2nd	3rd
1 Mother and Daughter Dress	\$2.00	\$1.00	\$.50
2 School Dress (adult)	2.00	1.00	.50
3 School Dress (youth)	2.00	1.00	.50
4 House Dress	2.00	1.00	.50
5 Dress, silk or rayon	2.00	1.00	.50
6 Dress, cotton	2.00	1.00	.50
7 Dress, wool	2.00	1.00	.50
8 Dress, evening	2.00	1.00	.50
9 Dress, girl's (adult)	2.00	1.00	.50
10 Dress, girl's (youth)	2.00	1.00	.50
11 Dress, western	2.00	1.00	.50
12 Dress, pant or pant suit	2.00	1.00	.50
13 Smock	1.50	.75	.50
14 Housecoat	1.50	.75	.50
15 Duster	1.50	.75	.50
16 Blouse or shirt (ladies)	1.50	.75	.50
17 Blouse or shirt (youth)	1.50	.75	.50
18 Shirt (men's)	1.50	.75	.50
19 Men's Western Shirt	1.50	.75	.50
20 Western Blouse	1.50	.75	.50
21 Culottes (dress or skirt)	1.50	.75	.50
22 Skirt, child's	1.50	.75	.50
23 Skirt for street wear (adult)	1.50	.75	.50
24 Skirt for street wear (youth)	1.50	.75	.50
25 Skirt, wool	2.00	1.00	.50
26 Snowsuit	2.00	1.00	.50
27 Coat	2.00	1.00	.50
28 Coat, wool	2.00	1.00	.50
29 Suit, wool	2.00	1.00	.50
30 Suit, ladies	2.00	1.00	.50
31 Suit, play	1.50	.75	.50
32 Jumpers	1.50	.75	.50
33 Shorts	1.50	.75	.50
34 Slacks	1.50	.75	.50

35 Apron, cotton	1.50	.75	.50
36 Apron, organdy	1.50	.75	.50
37 Pajamas	1.50	.75	.50
38 Ladies' nities	1.50	.75	.50
39 Bed jacket	1.50	.75	.50
40 Ponchos	1.50	.75	.50
41 Dancing costume	1.50	.75	.50
42 Infant's coat	1.50	.75	.50
43 Infant's dress	1.50	.75	.50
44 Booties and Mittens	1.50	.75	.50
45 Bonnet	1.50	.75	.50
46 Infant's kimono	1.50	.75	.50
47 Infant's sacque	1.50	.75	.50
48 Infant's sleeping garment	1.50	.75	.50
49 Household accessories	1.50	.75	.50
50 Slipcovers	2.00	1.00	.50
51 Draperies	2.00	1.00	.50
52 Curtains	2.00	1.00	.50
53 Pillowcases	1.50	.75	.50
54 Luncheon cloths	1.50	.75	.50
55 Table Cloths	1.50	.75	.50
56 Makeover	1.50	.75	.50
57 Mending	1.50	.75	.50
58 Wedding Dress	3.00	1.50	1.00
59 Other variety not listed	1.50	.75	.50

DIVISION II—CROCHET

Class	1st	2nd	3rd
1 Luncheon sets	1.50	1.00	.50
2 Infants wear	1.50	1.00	.50
3 Carriage robes	1.50	1.00	.50
4 Chair sets	1.50	1.00	.50
5 Scarves	1.50	1.00	.50
6 Stole	1.50	1.00	.50
7 Sweaters	1.50	1.00	.50
8 Hats, bags and carpet slippers	1.00	.75	.50
9 Lace	1.00	.75	.50
10 Edgings	1.00	.75	.50
11 Insertions	1.00	.75	.50
12 Accessories (personal)	1.00	.75	.50
13 Accessories (household)	1.00	.75	.50
14 Dollies	1.00	.75	.50
15 Placemats	1.00	.75	.50
16 Hot dish mats	1.00	.75	.50
17 Afghans	3.00	2.00	1.00
18 Rugs	2.00	1.50	1.00
19 Pot holders	1.00	.75	.50
20 Decorative pillows	1.00	.75	.50
21 Other variety not listed	1.00	.75	.50

DIVISION III—KNITTING

Class	1st	2nd	3rd
1 Sweaters	2.00	1.00	.75
2 Suits	2.00	1.00	.75
3 Sweaters (youth)	2.00	1.00	.75
4 Vest sweaters	2.00	1.00	.75
5 Ponchos	2.00	1.00	.75
6 Dresses	2.00	1.00	.75
7 Infants wear	2.00	1.00	.75
8 Carriage robes	2.00	1.00	.75
9 Stoles	2.00	1.00	.75
10 Accessories (personal)	1.00	.75	.50
11 Lace	1.00	.75	.50
12 Edgings	1.00	.75	.50
13 Insertions	1.00	.75	.50
14 Mittens	1.00	.75	.50
15 Socks	1.00	.75	.50
16 Slippers	1.00	.75	.50
17 Dollies	1.00	.75	.50
18 Hats and Booties	1.00	.75	.50
19 Skirts	1.00	.75	.50
20 Afghans	3.00	2.00	1.00
21 Afghans (youth)	3.00	2.00	1.00
22 Rugs	2.00	1.50	1.00
23 Pot holders	.75	.50	.25
24 Other variety not listed	1.00	.75	.50
25 Decorative pillows	1.00	.75	.50

DIVISION IV—EMBROIDERY

Class	1st	2nd	3rd
1 Bedspreads	2.00	1.00	.75
2 Tablecloths	2.00	1.00	.75
3 Bedroom ensembles	2.00	1.00	.75
4 Pictures	2.00	1.00	.75
5 Infants kimono and sacque sets	1.00	.75	.50
6 Aprons	1.00	.75	.50
7 Sheets	1.00	.75	.50
8 Towels	1.00	.75	.50
9 Luncheon sets	1.00	.75	.50
10 Scarves	1.00	.75	.50
11 Dollies	1.00	.75	.50
12 Swedish	1.00	.75	.50
13 Cutwork	1.00	.75	.50
14 Cross-stitch	1.00	.75	.50
15 Quilts	2.50	1.75	1.00
16 Pillowcases	1.50	1.00	.75
17 Decorative pillows	1.00	.75	.50
18 Pot holders	.75	.50	.25
19 Other variety not listed	1.00	.75	.50

DIVISION V—NEEDLEPOINT

Class	1st	2nd	3rd
1 Rugs	2.00	1.50	1.00
2 Pictures	1.50	1.00	.75
3 Chair Cushions	1.50	1.00	.75
4 Meritorious	1.50	1.00	.75
5 Other variety not listed	1.50	1.00	.75

DIVISION VI—TATTING

Class	1st	2nd	3rd
1 Lace	1.50	1.00	.75
2 Edgings	1.50	1.00	.75
3 Insertions	1.50	1.00	.75
4 Dollies	1.50	1.00	.75
5 Handkerchief edge	.75	.50	.25
6 Other variety not listed	1.50	1.00	.75

DIVISION VII—FEED SACKS

Class	1st	2nd	3rd
1 Dress	1.00	.75	.50
2 Pillowcases	1.00	.75	.50
3 Luncheon sets	1.00	.75	.50
4 Tablecloths	1.00	.75	.50
5 Towel sets	1.00	.75	.50
6 Aprons	1.00	.75	.50
7 Shirts	1.00	.75	.50
8 Blouses	1.00	.75	.50
9 Skirt	1.00	.75	.50
10 Household accessories	1.00	.75	.50
11 Pot holders	.75	.50	.25
12 Other variety not listed	1.00	.75	.50

DIVISION VIII—WOVEN

Class	1st	2nd	3rd
1 Afghan	3.00	2.00	1.00
2 Rugs	2.00	1.50	1.00

(Please turn to page 7.)



**Bake
a Pie
or Cake
AND ENTER
It in the
Home
Economics
Department
of the
Iosco
County
FAIR
July 25**



*You May Win
A Check and
A Ribbon!*
**Be Sure to Visit
the Display Area
at Fair Time**

(Continued from page 6.)

3 Pot holders75	.50	.25
4 Decorative pillows	1.00	.75	.50
5 Other variety not listed	1.00	.75	.50

DIVISION IX—TUFTED

Class	1st	2nd	3rd
1 Rugs	2.00	1.50	1.00
2 Decorative pillows	1.00	.75	.50
3 Other variety not listed	1.50	1.00	.75

DIVISION X—TAPESTRY

Class	1st	2nd	3rd
1 Rugs	2.00	1.50	1.00
2 Scarfs	1.00	.75	.50
3 Tablecloths	1.00	.75	.50
4 Other variety not listed	1.00	.75	.50

DIVISION XI—LIQUID EMBROIDERY

Class	1st	2nd	3rd
1 Aprons	1.00	.75	.50
2 Towels	1.00	.75	.50
3 Luncheon sets	1.00	.75	.50
4 Scarfs	1.00	.75	.50
5 Dollies	1.00	.75	.50
6 Pillow cases	1.00	.75	.50
7 Pot holder	1.00	.75	.50
8 Tablecloths	1.00	.75	.50
9 Other variety not listed	1.00	.75	.50

DIVISION XII—TOYS and DOLLS

Class	1st	2nd	3rd
1 Animals, cloth	1.00	.75	.50
2 Animals, yarn	1.00	.75	.50
3 Best dressed doll	1.00	.75	.50
4 Rag doll	1.00	.75	.50
5 Bed doll	1.00	.75	.50
6 Toy car	1.00	.75	.50
7 Soap doll	1.00	.75	.50
8 Doll clothes	1.00	.75	.50

DIVISION XIII—SENIOR HOBBY

Class	1st	2nd	3rd
1 Best hobby collection	1.50	1.00	.50
2 Most unusual	1.50	1.00	.50
3 Miscellaneous	1.50	1.00	.50

DIVISION XIV—SPECIAL ARTICLE

Class	1st	2nd	3rd
1 Crochet tablecloth	5.00	2.00	1.00
2 Crochet bedspread	5.00	2.00	1.00
3 Best specimen quilting	5.00	2.00	1.00

Michigan State Fair Special

Michigan State Fair Community Arts Department will award a special gold ribbon in each of the classes listed below. The winner of each ribbon is especially invited to exhibit the article on which the award is made, or in the case of perishable products, a comparable article at the next Michigan State Fair.

The ribbon will designate the exhibit as a special State Fair display entitling the winner to free entry of the exhibit and a complimentary pass to the next State Fair.

ALL COUNTY FAIR EXHIBITORS, as well as gold ribbon winners, are invited to enter their handiwork at the State Fair. Write to the Community Arts Department, Michigan State Fair, Detroit, Michigan 48203, for your copy of the Premium Book and an entry form.

NEEDLEWORK

Class	1st	2nd	3rd
Best bedspread or tablecloth	18.00	15.00	12.00
Best crocheted article other than bedspread or tablecloth	12.00	9.00	7.00
Best knitted article other than bedspread or tablecloth	12.00	9.00	7.00
Best quilt	18.00	15.00	12.00
Best rug	12.00	9.00	7.00

CANNING

Class	1st	2nd	3rd
Best display of fruit—4 jars	10.00	8.00	6.00
Best display of vegetables—4 jars	10.00	8.00	6.00
Best display of meat—3 jars	10.00	8.00	6.00
Best display of jelly—5 glasses	8.00	6.00	5.00

BAKING

Class	1st	2nd	3rd
Best loaf white bread	6.00	4.00	3.00
Best cake	7.00	5.00	4.00

All Special County Fair Exhibits will be judged before the opening of the Michigan State Fair.

DEPARTMENT G—ANTIQUES

Superintendent—Mrs. Adele Brown
Not responsible for exhibits after 9:00 p. m. Saturday.
ENTRY FEE—10 cents on each item.
Must be at least 75 years old. Label all entries, giving approximate age, history, etc.

DIVISION I—TOOLS

Description must accompany article.	1st	2nd	3rd
1 Farm hand	1.50	1.00	.50
2 Carpenter	1.50	1.00	.50
3 Tinsmith	1.50	1.00	.50
4 Mason	1.50	1.00	.50
5 Cooper	1.50	1.00	.50
6 Cobbler	1.50	1.00	.50
7 Other variety not listed	1.50	1.00	.50

DIVISION II—HOUSEHOLD FURNISHINGS

Class	1st	2nd	3rd
1 Cooking utensils	1.50	1.00	.50
2 Wooden	1.50	1.00	.50
3 Lighting equipment	1.50	1.00	.50
4 Iron	1.50	1.00	.50
5 Silverware	1.50	1.00	.50
6 Silver	1.50	1.00	.50
7 Pewter	1.50	1.00	.50
8 Copper	1.50	1.00	.50
9 Pictures	1.50	1.00	.50
10 Other variety not listed	1.50	1.00	.50

DIVISION III—CLOTHING AND QUILTS

Class	1st	2nd	3rd
1 Women's	1.50	1.00	.50
2 Men's	1.50	1.00	.50
3 Children	1.50	1.00	.50
4 Infant wear	1.50	1.00	.50
5 Ladies accessories	1.50	1.00	.50
6 Spread or quilt	1.50	1.00	.50
7 Needlework	1.50	1.00	.50
8 Other variety not listed	1.50	1.00	.50

DIVISION IV—MANUSCRIPTS

Class	1st	2nd	3rd
1 Letters	1.50	1.00	.50
2 Newspaper	1.50	1.00	.50
3 Books	1.50	1.00	.50
4 Bible	1.50	1.00	.50
5 Autographs	1.50	1.00	.50
6 Catalogues	1.50	1.00	.50
7 Tintypes	1.50	1.00	.50
8 Collection relating to history of Iosco County	1.50	1.00	.50

DIVISION V—TOYS

Class	1st	2nd	3rd
1 Handmade	1.50	1.00	.50
2 Wooden	1.50	1.00	.50
3 Metal	1.50	1.00	.50
4 Dolls	1.50	1.00	.50
5 Other variety not listed	1.50	1.00	.50

DIVISION VI—JEWELRY, MUSICAL INSTRUMENTS

Class	1st	2nd	3rd
1 Watches	1.50	1.00	.50
2 Clocks	1.50	1.00	.50
3 Ladies' jewelry	1.50	1.00	.50
4 Men's jewelry	1.50	1.00	.50
5 Musical instruments	1.50	1.00	.50
6 Men's pipes	1.50	1.00	.50
7 Other variety not listed	1.50	1.00	.50

DIVISION VII—FIREARMS, MONEY

Class	1st	2nd	3rd
1 Small, under 20" firearm	1.50	1.00	.50
2 Large firearm	1.50	1.00	.50
3 Money, paper	1.50	1.00	.50
4 Money, coin	1.50	1.00	.50
5 Oldest coin	1.50	1.00	.50

DIVISION VIII—CHINA

Class	1st	2nd	3rd
1 Oldest	1.50	1.00	.50
2 Ornamental	1.50	1.00	.50
3 Wash bowl and pitcher	1.50	1.00	.50
4 Tureens	1.50	1.00	.50
5 Water sets	1.50	1.00	.50
6 Punch bowl sets	1.50	1.00	.50
7 Composites	1.50	1.00	.50
8 Cups and saucers	1.50	1.00	.50
9 Collection of 6 in any one class	1.50	1.00	.50
10 Other variety not listed	1.50	1.00	.50

DIVISION IX—GLASSWARE

Class	1st	2nd	3rd
1 Colored	1.50	1.00	.50
2 Clear	1.50	1.00	.50
3 Cut	1.50	1.00	.50
4 Collection of 6 in any one class	1.50	1.00	.50
5 Other variety not listed	1.50	1.00	.50

**DEPARTMENT H—ART, HOBBIES and
HANDICRAFT**

Superintendent—Mrs. Louis Gilles
Not responsible for exhibits after 9:00 p. m. Saturday.
ENTRY FEE—10 cents for each item.

DIVISION I—ART

Art pictures must have hangers on back of pictures, so they may be hung.

Section A—Oil Paintings

Class	1st	2nd	3rd
1 Landscapes (adult)	1.50	1.00	.50
2 Landscapes (youth)	1.50	1.00	.50
3 Water scenes (adult)	1.50	1.00	.50
4 Water scenes (youth)	1.50	1.00	.50
5 Portrait (adult)	1.50	1.00	.50
6 Portrait (youth)	1.50	1.00	.50
7 Animals (adult)	1.50	1.00	.50
8 Animals (youth)	1.50	1.00	.50
9 Still Life (adult)	1.50	1.00	.50
10 Still Life (youth)	1.50	1.00	.50

Section B—Pen or Pencil Drawing

Classes Same as Section A

Section C—Charcoal Drawings

Classes Same as Section A

Section D—Crayon Drawings

(Children under 14 only.)
Classes Same as Section A

Section E—Water Color Painting

Classes Same as Section A

Section F—Pastels

Classes Same as Section A

Section G—Paint by Number

1 Landscapes	1.50	1.00	.50
2 Animals	1.50	1.00	.50
3 Matte Paper	1.50	1.00	.50
4 Fabric	1.50	1.00	.50

DIVISION II—HOBBIES

Class	1st	2nd	3rd
1 Stamp Collection (adult)	1.50	1.00	.50
2 Stamp Collection (youth)	1.50	1.00	.50
3 Hobby Collection (adult)	1.50	1.00	.50
4 Hobby Collection (youth)	1.50	1.00	.50
5 Collection of War mementoes	1.50	1.00	.50
6 Coin Collection	1.50	1.00	.50
7 Airplane (without motor)	1.50	1.00	.50
8 Airplane (with motor)	1.50	1.00	.50
9 Boat	1.50	1.00	.50
10 Car (without motor) large	1.50	1.00	.50
11 Car (with motor) large	1.50	1.00	.50
12 Small Car	1.50	1.00	.50
13 Photography, black and white	1.50	1.00	.50
14 Photography, colored film	1.50	1.00	.50
15 Shell collection	1.50	1.00	.50
16 Other variety not listed	1.50	1.00	.50

DIVISION III—HANDICRAFT

Class (Must be made by Exhibitor)	1st	2nd	3rd
1 Train	1.50	1.00	.50
2 Game or toy	1.50	1.00	.50
3 Furniture (made by adult)	1.50	1.00	.50
4 Furniture (made by youth)	1.50	1.00	.50
5 Brass or copper article	1.50	1.00	.50
6 Jewelry (shell)	1.50	1.00	.50
7 Jewelry (other)	1.50	1.00	.50
8 Ceramics (plaques) hand painted	1.50	1.00	.50
9 Ceramics—moulded	1.50	1.00	.50
10 Ceramics (other)	1.50	1.00	.50
11 Birdhouse (adult)	1.50	1.00	.50
12 Birdhouse (youth)	1.50	1.00	.50
13 Handpainted china	1.50	1.00	.50
14 Articles made of glass or contain glass	1.50	1.00	.50
15 Articles made from kits	1.50	1.00	.50
16 Leather work	1.50	1.00	.50
17 Decoupage	1.50	1.00	.50
18 Candle art	1.50	1.00	.50
19 Driftwood	1.50	1.00	.50

(Please turn to page 8.)



Free Exhibit Space

Make Reservations with
R. M. SAMSON, Sr.
Whittemore

One Week prior to
Opening Date

AUTO DEALERS
and
IMPLEMENT DEALERS

«»»

- All Makes
- All Models



(Continued from page 7.)

20 String art	1.50	1.00	.50
21 Wood carving	1.50	1.00	.50
22 Tol'e art	1.50	1.00	.50
23 Other variety not listed	1.50	1.00	.50

DEPARTMENT I—GAMES and CONTESTS

Superintendent—Elwood Ruckle.

DIVISION I—CONTESTS

Class	1st	2nd	3rd
1 Boys and girls foot race, under 12 years	3.00	2.00	1.00
2 Tot race, under 6 years	3.00	2.00	1.00
3 Three legged race, 12 years and over	3.00	2.00	1.00
4 Three legged race, under 12 years	3.00	2.00	1.00
5 Bicycle race, 12 years and over	3.00	2.00	1.00
6 Bicycle race, under 12 years	3.00	2.00	1.00
7 Egg throwing contest, 12 years and over	3.00	2.00	1.00
8 Pie eating contest	3.00	2.00	1.00
9 Retirement foot race, 62 years and over	3.00	2.00	1.00

DIVISION II—PARADE

Entry tags and numbers for the parade must be picked up at the office prior to line up.

Class	1st	2nd	3rd	4th	5th
1 Decorated floats	25.00	20.00	15.00	10.00	5.00
2 Decorated bicycles, toy wagons, under age 14					
	5.00	3.00	2.00		
3 Calithumpian (Parade)	10.00	6.00	4.00		
4 Calihumpian (Parade)					
	10.00	6.00	4.00		

DEPARTMENT J—CONSERVATION

NO ENTRY FEE

Superintendent—Lyle Bielby.

All exhibits of trees are to show freedom from disease, vigor and the results of good management practices.

DIVISION I—Scots Pine, 4 years or older

Class	1st	2nd	3rd
	5.00	3.00	2.00

DIVISION II—Spruce, 4 years or older

Class	1st	2nd	3rd
	5.00	3.00	2.00

DIVISION III—Best Specimen Farm Tree—Under 4 years

Class	1st	2nd	3rd
	5.00	3.00	2.00

DIVISION IV—Best Forest Type, Conifer.

Class	1st	2nd	3rd
	5.00	3.00	2.00

DIVISION V—Game Cover Species in cluster

Class	1st	2nd	3rd
	5.00	3.00	2.00

DIVISION VI—Best Pictures of Conservation Practices

Class	1st	2nd	3rd

Postal card size or larger. Tree planting, erosion prevention, wildlife habitat or other. 5.00 3.00 2.00

DEPARTMENT A—YOUTH DIVISION

Superintendents: Val Samson, Charles Preston.

PROGRAM

Wednesday, July 25—
9:00-4:00 Registration and entry of exhibits.
5:00-9:00 Judging of all Agricultural and Home Economics Youth exhibits on display in the Community Building.

Thursday, July 26—
9:00-4:00 Judging of Youth Division Livestock and Dairy Exhibits—except horses.

Friday, July 27—
9:00-5:00 Judging of Youth Horses.

GENERAL RULES

- This division is open to any boy or girl under 19 years of age.
- No entry fee will be required in this youth class.
- The exhibits will be judged upon an A B C basis and awards will be paid in each class. Only one premium per exhibitor will be paid per class.
- Youth exhibits may be exhibited in either Youth Division or Open Class NOT BOTH.
- All articles must be the work of the exhibitor and must be entered by the exhibitor.
- All exhibitors with animal exhibits are responsible for feeding and caring for them during the time at the fair. Exhibitor is responsible for keeping animals, pens, etc. clean at all times.
- Exhibitors are to fit, show and take care of their own exhibits.
- All State sanitary and health regulations MUST be met.
- Showmanship classes:
 - A youth showmanship class exhibitor may not enter more than one class.
 - Basis of award: (1) Showmanship by owner (2) Fitting of animal (3) Training of animal.
 - Showmanship classes shall be divided (1) Showmanship contestants, 14 years and under (as of January 1) (2) Showmanship contestants, 15 years and over (as of Jan. 1).
- All Livestock exhibits and the area occupied by them must be kept in order by the exhibitor as directed by the Superintendent in charge. Each youth is responsible for his own clean-up equipment such as rakes, forks, shovels, etc.
- All vegetables and flowers exhibited must be raised by the exhibitor.
- All food exhibits must be packaged in clear polyethylene bags, secured with a rubber band or wire twist. Such bags may also be used as protectors for knitting exhibits.
- No premium money will be paid on any exhibit in which notebooks or work books are exhibited singly. These exhibits will receive only ribbon awards.
- No stallions shown in Youth Division.

YOUTH EXHIBITS

DEPARTMENT A—LIVESTOCK

DIVISION I—DAIRY CATTLE

Section a—Brown Swiss

Class	A	B	C
1 Junior calf	5.00	3.00	2.00
2 Senior calf	5.00	3.00	2.00
3 Junior yearling	7.50	5.00	3.00
4 Senior yearling	10.00	7.50	5.00
5 Cow, two and under three	12.00	10.00	8.00
6 Cow, three and under four	12.00	10.00	8.00
7 Aged cow, over four years of age	12.00	10.00	8.00

Classes and Premiums as listed in Section a, are the same for the below listed breeds:

Section b—Jerseys

Section c—Guernseys

Section d—Holsteins

Section e—Ayshires

8 Showmanship, all breeds RIBBON only
Age of cows determined from July 1, 1970.

McDonald 4-H Dairy Science Award; Sponsored by: McDonald

Cooperative Dairy Co.

Flint, Michigan

An award will be presented to the 4-H dairy member having the best 4-H Dairy Science Educational Exhibit and/or Dairy Science Demonstration. Only members 14 years of age or older during the current project year are eligible to participate. Also previous winners are not eligible in subsequent years. Each exhibit will be limited to a table top space 3' w by 4' l. The member presenting the best exhibit and/or demonstration will be given an award trip to Flint, Michigan on a date to be announced as a guest of McDonald Cooperative Dairy Company.

DIVISION II—Beef Cattle

Section a—Shorthorn

Class	A	B	C
1 Junior calf	5.00	4.00	3.00
2 Senior calf	5.00	4.00	3.00
3 Junior yearling	5.00	4.00	3.00
4 Senior yearling	5.00	4.00	3.00
5 Commercial cow and calf	12.00	10.00	8.00

Classes and Premiums as listed in Section a are the same for the below listed breeds:

Section b—Angus

Section c—Hereford

Section d—Cross breeds

Section e

Class	A	B	C
1 Market steer	5.00	4.00	3.00
2 Spayed Marten	5.00	4.00	3.00
3 Feeder steer under 700 lbs.	5.00	4.00	3.00
4 Junior showmanship, 9 years to 13 years			RIBBON ONLY
5 Senior showmanship, 14 years to 18 years			RIBBON ONLY
6 Grand Champion by breed			RIBBON ONLY

Designation of age.

DIVISION III—SHEEP

Class	A	B	C
1 Ewe lamb	4.00	3.00	2.00
2 Aged ewe	6.00	5.00	4.00
3 Ram lamb	4.00	3.00	2.00
4 Aged ram	6.00	5.00	4.00
5 Pen of three feeder lambs	6.00	5.00	4.00
6 Showmanship			RIBBON ONLY

DIVISION IV—SWINE

Section A—Yorkshire

Class	A	B	C
1 Junior yearling boar	4.00	3.00	2.00
2 Senior yearling boar	4.00	3.00	2.00
3 Junior spring boar	4.00	3.00	2.00
4 Senior spring boar	4.00	3.00	2.00
5 Junior yearling gilt	4.00	3.00	2.00
6 Senior yearling gilt	4.00	3.00	2.00
7 Junior spring gilt	4.00	3.00	2.00
8 Senior spring gilt	4.00	3.00	2.00
9 Sow and litter	7.00	5.00	3.00

Classes and Premiums as listed in Section A, are the same for the below listed breeds.

Section b—Hampshire

Section c—Chester White

Section d—Poland China

Section e—Berkshire

Section f—All other breeds and cross breeds.

Section h—Market Hogs

Class	A	B	C
1 Pen of 3 mixed	7.00	5.00	3.00
2 Single barrow	7.00	5.00	3.00
3 Grand Champion by breed			RIBBON ONLY
4 Junior showmanship, 9 years to 13 years			RIBBON ONLY
5 Senior showmanship, 14 years to 18 years			RIBBON ONLY
6 Pen of three feeder pigs (any breed)	5.00	4.00	3.00

Definition for Determination of Age

A junior yearling is one born during the period January 15 to June 30th of the year preceding exhibit year. A senior pig is one born during the period July 1st of the year preceding exhibit year to December 31 of the year preceding exhibit year. A senior spring pig is one born during the period of January 1 to February 28 or 29 of exhibit year. A junior spring pig is one born during the period March 1 to June 30 of exhibit year.

DIVISION V—PONIES

Height 52 inches and under.

Class	A	B	C
1 Halter class, foals	3.00	2.00	1.00
2 Halter class, yearlings	3.00	2.00	1.00
3 Halter class, mares	3.00	2.00	1.00
4 Halter class, gelding	3.00	2.00	1.00
5 Halter class, Grand Champion			RIBBON ONLY
6 Fitting and showmanship	3.00	2.00	1.00
7 Champion fitting and showmanship			RIBBON ONLY
8 Pleasure class	3.00	2.00	1.00
9 Champion pleasure class			RIBBON ONLY
10 Reining class	3.00	2.00	1.00
11 Champion reining class			RIBBON ONLY
12 Horsemanship			RIBBON ONLY
13 Championship horsemanship			RIBBON ONLY

DIVISION VI—HORSES

Class	A	B	C
1 Halter class, foals	3.00	2.00	1.00
2 Halter class, yearlings	3.00	2.00	1.00
3 Halter class, mares	3.00	2.00	1.00
4 Halter class, gelding	3.00	2.00	1.00
5 Halter class, Grand Champion			RIBBON ONLY
6 Fitting and showmanship, 14 years and under	3.00	2.00	1.00
7 Fitting and showmanship, 15 years and over	3.00	2.00	1.00
8 Champion fitting and showmanship			RIBBON ONLY
9 Pleasure class, 14 years and under	3.00	2.00	1.00
10 Pleasure class, 15 years and over	3.00	2.00	1.00
11 Champion pleasure class			RIBBON ONLY
12 Horsemanship, 14 years and under			RIBBON ONLY
13 Horsemanship, 15 years and over			RIBBON ONLY
14 Championship Horsemanship			RIBBON ONLY
15 Reining class, junior	3.00	2.00	1.00
16 Reining class, senior	3.00	2.00	1.00
17 Champion reining			RIBBON ONLY

DEPARTMENT B—POULTRY and RABBITS

Class	A	B	C
1 Pen three birds, egg breed (any combination of sex)	2.00	1.50	1.00
2 Pen three birds, meat breed (any combination of sex)	2.00	1.50	1.00
3 Pen three birds, novelty breed (any combination sex)	2.00	1.50	1.00
4 Hen and brood of chicks, any breed	3.00	2.00	1.00
5 Pen of three ducks, any breed	2.00	1.50	1.00
6 Pen of three geese, any breed	2.00	1.50	1.00
7 Pen of three turkeys, any breed	2.00	1.50	1.00
8 Doe rabbit, any breed	2.00	1.50	1.00
9 Buck rabbit, any breed	2.00	1.50	1.00
10 Pen of three feeder rabbits	2.00	1.50	1.00

(Please turn to page 9.)

4-H CLUB HORSE SHOW

Fastest Growing Youth Activity in Iosco



Don't Miss This Outstanding Program



(Continued from page 8.)

11 Doe and litter	3.00	2.00	1.00
12 Pen of three fowl (example: guinea, quail, pidgeon, pheasant)	2.00	1.50	1.00
13 One dozen eggs	2.00	1.50	1.00
14 One dozen eggs (brown)	2.00	1.50	1.00
15 Poultry science, scrapbook, or written report on some scientific exhibit showing some phase of poultry or rabbit production or management	3.00	2.00	1.00

DEPARTMENT C—HORTICULTURE FLORACULTURE and LANDSCAPING DIVISION I—FLOWERS

Class	A	B	C
1 Specimens of six small flowers, one variety	2.00	1.50	1.00
2 Specimen of one large flower	2.00	1.50	1.00
3 Potted flowering plant	2.00	1.50	1.00
4 Potted foliage plant	2.00	1.50	1.00
5 Flower arrangement, home grown, purchased, or artificial flowers may be used	3.00	2.00	1.00
6 Arrangement of dried flowers	2.00	1.50	1.00
7 Corsage	3.00	2.00	1.00
8 Holiday decorations	3.00	2.00	1.00

DIVISION II—FRUIT or VEGETABLES

Class	A	B	C
1 One plate of one variety grown, 9 to 12 age group	2.00	1.50	1.00
2 One box or basket of three varieties (3 of each, fruit or vegetables) 9 to 14 age group	2.00	1.50	1.00
3 One box or basket with at least 8 varieties of fruit or vegetables	5.00	4.00	3.00
4 Landscaping scrapbook, with pictures or blueprint or written report with pictures or blueprint	3.00	2.00	1.00

DEPARTMENT D—AGRONOMY DIVISION I—CROPS

Section A—Small Grain

Class	A	B	C
1 Corn, 1 qt. or 12 ears	2.00	1.50	1.00
2 Wheat, 1 qt.	2.00	1.50	1.00
3 Oats, 1 qt.	2.00	1.50	1.00
4 Any other small grain, not listed above, displayed in equivalent amount	2.00	1.50	1.00

Section B—Field Crops Other than Grains

Class	A	B	C
1 Potatoes, 32	2.00	1.50	1.00
2 Sugar beets, 5	2.00	1.50	1.00
3 Hay, at least 3 lbs.	2.00	1.50	1.00
4 Any other crop for cash or feed and displayed in equal amounts	2.00	1.50	1.00

Section C—Crop Science

Class	A	B	C
1 Education exhibit of 20 labeled, mounted weeds	2.00	1.50	1.00
2 Educational exhibition (notebook or poster showing lawn management or crop production, showing soil, crops, fertilizer)	2.00	1.50	1.00
3 Special experimental exhibit with written consent of local 4-H leader	5.00	3.00	2.00

DEPARTMENT E—HOME ECONOMICS DIVISION I—FOOD PREPARATION

Section A—Baked Goods

Class—9 to 12 age group	A	B	C
1 Three muffins	2.00	1.50	1.00
2 Three cookies or brownies	2.00	1.50	1.00
3 One-half loaf quick bread or four biscuits	2.00	1.50	1.00
4 One-half loaf yeast bread or four yeast rolls	2.00	1.50	1.00
5 One-quarter unfrosted cake	2.00	1.50	1.00
6 Decorated cake or party cup cakes	5.00	4.00	3.00
7 Specialties, fancy breads, sweet rolls, pies, etc.	5.00	4.00	3.00
8 Educational exhibit—scrapbook and pictures, or written report and pictures	3.00	2.00	1.00
Class—13 to 14 age group	A	B	C
9 Three muffins	2.00	1.50	1.00
10 Three cookies or brownies	2.00	1.50	1.00
11 One-half loaf quick bread or four biscuits	2.00	1.50	1.00
12 One-half loaf yeast bread or four yeast rolls	2.00	1.50	1.00
13 One-quarter unfrosted cake	2.00	1.50	1.00
14 Decorated cake or party cup cakes	5.00	4.00	3.00
15 Specialties—fancy breads, sweet rolls, pies, etc.	5.00	4.00	3.00
16 Educational exhibit—scrapbook and pictures, or written report and pictures	3.00	2.00	1.00
Class—15 to 18 age group	A	B	C
17 Three Muffins	2.00	1.50	1.00
18 Three cookies or brownies	2.00	1.50	1.00
19 One-half loaf quick bread or four biscuits	2.00	1.50	1.00
20 One-half loaf yeast bread or four yeast rolls	2.00	1.50	1.00
21 One-quarter unfrosted cake	2.00	1.50	1.00
22 Decorated cake or party cup cakes	5.00	4.00	3.00
23 Specialties—Fancy breads, sweet rolls, pies, etc.	5.00	4.00	3.00
24 Educational exhibit—scrapbook and pictures, or written report and pictures	3.00	2.00	1.00

DIVISION II—FOOD PRESERVATION AND OUTDOOR MEALS

Class	A	B	C
1 Educational exhibit—scrapbook with pictures or chart or written report with pictures or chart on some phase of nutrition	1.50	1.00	.50
2 Canned fruit (2 jars of any fruit)	1.50	1.00	.50
3 Canned vegetables (2 jars of any vegetable)	1.50	1.00	.50
4 Jams or jellies (2 jars of either)	1.50	1.00	.50
5 Pickles	1.50	1.00	.50
6 Outdoor cooking equipment display	1.50	1.00	.50

DIVISION III—CLOTHING

Section A—Young Miss—9-12 age group

Class	A	B	C
1 Poncho	2.00	1.50	1.00
2 Skirt	2.00	1.50	1.00
3 Blouse	2.00	1.50	1.00
4 Any other article not listed above	2.00	1.50	1.00

Section B—Junior Miss—13 to 14 age group

Class	A	B	C
1 Dress	3.00	2.50	1.50
2 Pajamas	3.00	2.50	1.50
3 Slacks	3.00	2.50	1.50
4 Two piece outfit	3.50	3.00	2.50
5 Three piece ensemble	4.00	3.50	3.00
6 Any other article not listed above	3.00	2.50	1.50

Section C—Senior Miss 15 to 18 age group

Class	A	B	C
1 Suit	5.00	4.00	3.00
2 Coat	5.00	4.00	3.00
3 Two piece ensemble	5.00	4.00	3.00
4 Three piece ensemble	5.00	4.00	3.00
5 Any other article not listed above	5.00	4.00	3.00

Section a—Young Knitter, 9 to 12 age group

DIVISION IV—KNITTING

Class	A	B	C
1 Mittens	2.00	1.50	1.00
2 Scarf	2.00	1.50	1.00
3 Scuffs	2.00	1.50	1.00
4 Any other article not listed above	2.00	1.50	1.00

Section b—Junior Knitter, 12 to 14 age group

Class	A	B	C
1 Mittens	2.00	1.50	1.00
2 Scarf	2.00	1.50	1.00
3 Scuffs	2.00	1.50	1.00
4 Any other article not listed above	2.00	1.50	1.00

Section c—Senior Knitter, 15 to 18 age group

Class	A	B	C
1 Sweater	5.00	4.00	3.00
2 Dress	5.00	4.00	3.00
3 Coat or suit	5.00	4.00	3.00
4 Any other article not listed above	5.00	4.00	3.00

DIVISION V—CROCHETING AND EMBROIDERY

Section—9 to 12 age group

Class	A	B	C
1 Handkerchief	1.50	1.00	.50
2 Pillow case	1.50	1.00	.50
3 Napkin	1.50	1.00	.50
4 Scarf	1.50	1.00	.50
5 Any other article not listed above	1.50	1.00	.50

Section—13 to 18 age group

Class	A	B	C
1 Handkerchief	1.50	1.00	.50
2 Pillow	1.50	1.00	.50
3 Napkins	1.50	1.00	.50
4 Scarf	1.50	1.00	.50
5 Any other article not listed above	1.50	1.00	.50

DIVISION VI—FAMILY LIVING and HOME DESIGN

Section a—9 to 12 age group

Class	A	B	C
1 Educational exhibit, scrapbook or pictures or pictures or written report	2.00	1.50	1.00

Section b—13 to 14 age group

Class	A	B	C
1 Educational exhibit, scrapbook, picture or written report	2.00	1.50	1.00

Section c—15 to 18 age group

Class	A	B	C
1 Educational exhibit, scrapbook, pictures or written report	2.00	1.50	1.00
2 Home design educational exhibit, notebook, scrapbook or written report	2.00	1.50	1.00
3 Pictures or blueprints of rooms that were refinished by exhibitor	3.00	2.00	1.00
4 Exhibit one or more pieces of refinished furniture	5.00	4.00	3.00

DIVISION VII—PERSONAL APPEARANCE

Class	A	B	C
1 Educational exhibit, scrapbook with poster or pictures; or written report with poster or pictures	2.00	1.50	1.00
2 Display of personal appearance items with written explanation	2.00	1.50	1.00

DEPARTMENT F—ARTS, CRAFTS AND HOBBIES

DIVISION I—PAINTING AND DRAWING

Section a—Oil

Class	A	B	C
1 Still life	5.00	3.00	2.00
2 Arrangements	5.00	3.00	2.00
3 Outdoor scene	5.00	3.00	2.00
4 Portrait	5.00	3.00	2.00
5 Oil painted photographs	3.00	2.00	1.00

Section b—Watercolors

Class	A	B	C
1 Still life	5.00	3.00	2.00
2 Arrangement	5.00	3.00	2.00
3 Outdoor scene	5.00	3.00	2.00
4 Portrait	5.00	3.00	2.00

Section c—Pencil Sketch

Class	A	B	C
1 Still life	3.00	2.00	1.00
2 Arrangement	3.00	2.00	1.00
3 Portrait	3.00	2.00	1.00
4 Outdoor life	3.00	2.00	1.00

Section d—Charcoal Sketch

Class	A	B	C
1 Still life	3.00	2.00	1.00
2 Arrangement	3.00	2.00	1.00
3 Portrait	3.00	2.00	1.00
4 Outdoor scenes	3.00	2.00	1.00

DIVISION II—SCULPTURE

Class	A	B	C
1 Articles carved (wood, soap, etc.)	3.00	2.00	1.00
2 Articles made (paper mache, wire, screen, etc.)	3.00	2.00	1.00
3 Articles made (abstract type)	3.00	2.00	1.00

DIVISION III—CERAMICS

Class	A	B	C
1 Two articles made (hand mold)	3.00	2.00	1.00
2 Two articles made (coil method)	3.00	2.00	1.00
3 Any other article not listed above	3.00	2.00	1.00

DIVISION IV—CREATIVE WRITING

Class	A	B	C
1 Exhibit short poems or short stories written by exhibitor	3.00	2.00	1.00
2 Exhibit articles written by exhibitor	3.00	2.00	1.00
3 Exhibit speeches, scripts, etc. written by exhibitor	3.00	2.00	1.00

DIVISION V—LEATHERCRAFT

Class	A	B	C
1 Laced article made by (9-12 yr.)	1.50	1.00	.50
2 Laced article made by (13-14 yr.)	2.00	1.50	1.00
3 Laced article made by (15-18 yr.)	3.50	2.50	1.50
4 Carved or tooled article made by (9-12 yr.)	2.00	1.50	1.00
5 Carved or tooled article made by (13-14 yr.)	3.00	2.00	1.00
6 Carved or tooled article made by (15-18 yr.)	5.00	3.00	2.00

DIVISION VI—WOODWORKING

Class	A	B	C
1 Exhibit articles made by (9-12 yr.)	2.00	1.50	1.00
2 Exhibit articles made by (13-14 yr.)	3.00	2.00	1.00
3 Exhibit articles made by (15-18 yr.)	5.00	3.00	2.00

DIVISION VII—LIQUID EMBROIDERY

Class	A	B	C
1 Exhibit article made by (9-12 yr.)	1.50	1.00	.50
2 Exhibit article made by (13-14 yr.)	2.00	1.50	1.00
3 Exhibit article made by (15-18 yr.)	3.00	2.00	1.00

DIVISION VIII—OTHER CRAFTS NOT PREVIOUSLY MENTIONED

Class	A	B	C
1 Exhibit articles made (metal)	3.00	2.00	1.00
2 Exhibit articles made (plastic)	3.00	2.00	1.00
3 Exhibit articles made (any other man-made material)	3.00	2.00	1.00

(Please turn to page 10.)



WILLIAM G. MILLIKEN
Governor of the State of Michigan



STATE OF MICHIGAN
OFFICE OF THE GOVERNOR
LANSING

TO FAIR VISITORS AND FAIR SPONSORS

When you visit a county fair, you see many of the fine products of Michigan agriculture which help to make our state a pleasant place in which to live.

Each year less land is devoted to farms, yet production continues to keep pace with our expanding population. As urbanization continues, some of our prime agricultural land is lost to other uses. Eventually, this could lead to a decline in food and fiber production.

To continue growing Michigan's smallest agricultural products, we need to implement a comprehensive land-use plan. This will benefit not only agriculture, but recreation and industry as well.

It is a pleasure to extend an official welcome to you for the 1978 Fair. It is my hope that, as you examine the fine exhibits, you will gain an even greater appreciation of the Great Lakes State.

Sincerely,
William G. Milliken
Governor



B. DALE BALL
Director, Department of Agriculture

STATE OF MICHIGAN

DEPARTMENT OF AGRICULTURE
MICHIGAN STATE UNIVERSITY
1000 SPRING LANE
LANSING, MICHIGAN 48906
B. DALE BALL, Director

DEPARTMENT OF AGRICULTURE
MICHIGAN STATE UNIVERSITY
1000 SPRING LANE
LANSING, MICHIGAN 48906
B. DALE BALL, Director

TO VISITORS AND SPONSORS

County fairs are unique institutions. No other events promote Michigan agricultural products and agriculture or reflect the economic, social and cultural character of the state as do our fairs.

As you walk through the grounds, look carefully at the modern equipment used to produce your food and fiber. It represents only a small percentage of the farmer's costs.

No other industry requires as great an investment per worker as does agriculture. According to economists, farm investment over the past 25 years has averaged 50¢ per acre. This compares to approximately \$15,000 in the automobile industry.

It is a pleasure to welcome you to your county fair on behalf of the Commission of Agriculture and the Michigan Department of Agriculture. May your visit be interesting and entertaining.

Sincerely,
B. Dale Ball
Director

(Continued from page 9.)

DIVISION IX—PHOTOGRAPHY			
Class	A	B	C
1 Four best pictures mounted on cardboard	3.00	2.00	1.00
2 Four or more pictures showing series of designs and shadows	3.00	2.00	1.00
3 Six or more slides	3.00	2.00	1.00
4 Portrait or tinted picture	3.00	2.00	1.00

DIVISION X—HOBBIES			
Class	A	B	C
1 Stamp collection	3.00	2.00	1.00
2 Coin collection	3.00	2.00	1.00
3 Doll collection	3.00	2.00	1.00
4 Paint or color by number	3.00	2.00	1.00
5 Other collections not listed above	3.00	2.00	1.00

DEPARTMENT G—MISCELLANEOUS PROJECT EXHIBITS			
DIVISION I—DOGS			
Class	A	B	C
1 Notebook with pictures or written report with pictures	2.50	2.00	1.50
2 Dog (any age, any breed) trained in obedience	5.00	4.00	3.00

DIVISION II—ELECTRICAL SCIENCE			
Class	A	B	C
1 Exhibit articles made (9-12 yr.)	2.00	1.50	1.00
2 Exhibit articles made (13-14 yr.)	2.00	1.50	1.00
3 Exhibit articles made (15-18 yr.)	3.00	2.00	1.00
4 Educational exhibit (Report with sketches, pictures or illustrations)	5.00	3.00	2.00
5 Electronics educational exhibit (articles made or written report)	5.00	3.00	2.00

DIVISION III—EMERGENCY PREPAREDNESS			
Section a—Emergency displays			
Class	A	B	C
1 Exhibit first aid kit	2.00	1.50	1.00
2 Educational exhibit (scrapbook and poster or pictures or written report with poster or pictures)	3.00	2.00	1.00

Section b—Bicycle Safety			
Class	A	B	C
1 Educational exhibit (scrapbook, poster or pictures or written report and poster or pictures)	2.00	1.50	1.00

Section c—Drug Education, Displays			
Class	A	B	C
1 Educational exhibit (scrapbook, poster or pictures or written report with poster or pictures)	2.00	1.50	1.00
2 Box display showing some phase of drug education	2.00	1.50	1.00
3 Special experimental exhibit	2.50	2.00	1.00

DIVISION IV—CONSERVATION			
Section a—Basic Conservation			
Class	A	B	C
1 Educational exhibit (scrapbook, poster, chart, written report and poster or chart)	2.00	1.50	1.00
2 Box display showing some form of conservation	2.00	1.50	1.00

Section b—Water Resources			
Class	A	B	C
1 Educational exhibit (scrapbook, pictures, poster or chart or written report with pictures, poster or chart)	2.00	1.50	1.00
2 Box display showing water conservation	2.00	1.50	1.00

DIVISION V—ENTOMOLOGY			
Class	A	B	C
1 Exhibit 24 or more adult insects, labeled (9-12 yr.)	2.00	1.50	1.00
2 Exhibit 50 or more insects (13-14 yr.)	3.00	2.00	1.00
3 Exhibit 100 or more insects (15-18 yr.)	5.00	3.00	2.00

DIVISION VI—HERDSMANSHIP			
Section a—Herdsmanship			
Class	A	B	C
1 Herdsmanship (includes all livestock by clubs)	3.00	2.00	1.00

Section b—Archery			
Class	A	B	C
1 Display of archery equipment with written explanation	2.00	1.50	1.00

2 Educational exhibit, scrapbook, pictures, or written report	2.00	1.50	1.00
3 Box display on some phase of archery	2.00	1.50	1.00

Section c—Small Engines			
Class	A	B	C
1 Display of a small engine with a written explanation	2.00	1.50	1.00
2 Educational exhibit, scrapbook, pictures, or written report	2.00	1.50	1.00
3 Box display on some phase of small engines	2.00	1.50	1.00

Section d—Snowmobiles			
Class	A	B	C
1 Educational exhibit, scrapbook, pictures or written report	2.00	1.50	1.00
2 Box display showing some phase of snowmobiles, education, safety, or operational procedures	2.50	2.00	1.50
3 Snowmobile display with posters	2.50	2.00	1.50

Section e—Gun Safety			
Class	A	B	C
1 Educational exhibit, scrapbook, pictures or written report	2.00	1.50	1.00
2 Gun display with written explanation	2.00	1.50	1.00

DEPARTMENT H—SCIENCE			
DIVISION I—VETERINARY SCIENCE			
Class	A	B	C
1 Educational exhibit, scrapbook, pictures or written report	2.00	1.50	1.00
2 Box display showing some learning experience in Veterinary Science	2.00	1.50	1.00
3 Special experimental project	2.50	2.00	1.50

Section b—Dairy Science			
Class	A	B	C
1 Educational exhibit, scrapbook, pictures or written report	2.00	1.50	1.00
2 Box display showing some learning experience in Dairy Science	2.00	1.50	1.00
3 Special experimental project	2.50	2.00	1.50

Section c—Horse Science			
Class	A	B	C
1 Educational exhibit, scrapbook, pictures or written report	2.00	1.50	1.00
2 Box display, showing some learning experience in Horse Science	2.00	1.50	1.00
3 Special experimental project	2.50	2.00	1.50

DEPARTMENT XII—HARNES RACING			
Superintendent of Speed—Robert Ruckle			
Member Northern Michigan Fair and Racing Association.			
Conditions:			
United States Trotting Association rules to govern, with exception.			
Six to enter—five to start all races.			
Two heat plan—Every heat a race.			
Money Divided—45-25-15-10-5%.			
Rights reserved to race elimination heats, change classes that do not fill, reject any entry and deny stall space to anyone for sufficient reasons.			
Starting gate will be used. Entries must be made day before race. Entries close at 10:00 a. m. Entry fee 2½ percent.			
Not responsible for injuries or accidents.			
Veterinary certificate to accompany all scratches.			

THURSDAY, JULY 26			
Class	A	B	C
Trot N. W. 2,000			\$1,200.00
Pace N. W. 3,000			1,200.00
Pace N. W. 10,000			1,200.00

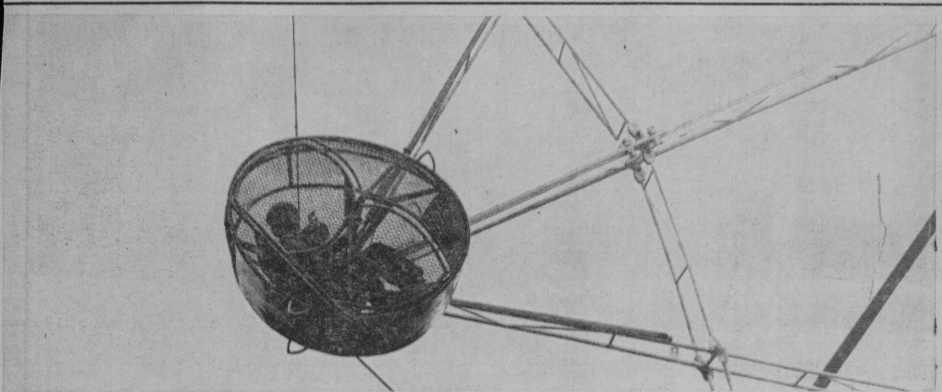
FRIDAY, JULY 27			
Class	A	B	C
Trot N. W. 500 (5 years old and under)			\$1,200.00
Pace N. W. 500 (4 years old and under)			1,200.00
Pace N. W. 1,500			1,200.00

SATURDAY, JULY 28			
Class	A	B	C
Trot N. W. 5,000			\$1,200.00
Pace N. W. 5,000			1,200.00
Trot N. W. 20,000			1,200.00
Pace N. W. 20,000			1,200.00

Crave Action? Get It LIVE



During Three Days of HARNES RACING at the Iosco Co. Fair Thursday, Friday and Saturday



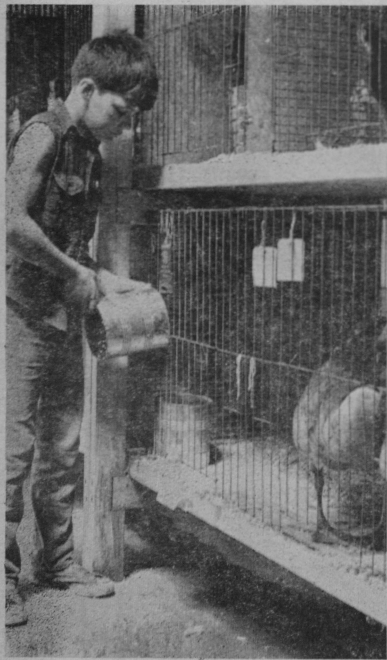
IOSCO FAIR TIME



11x17L
12x18L



A home canning-winner displays her blue ribbons.



A young exhibitor tends his chickens.



Volunteers are readying grounds for the fair.

